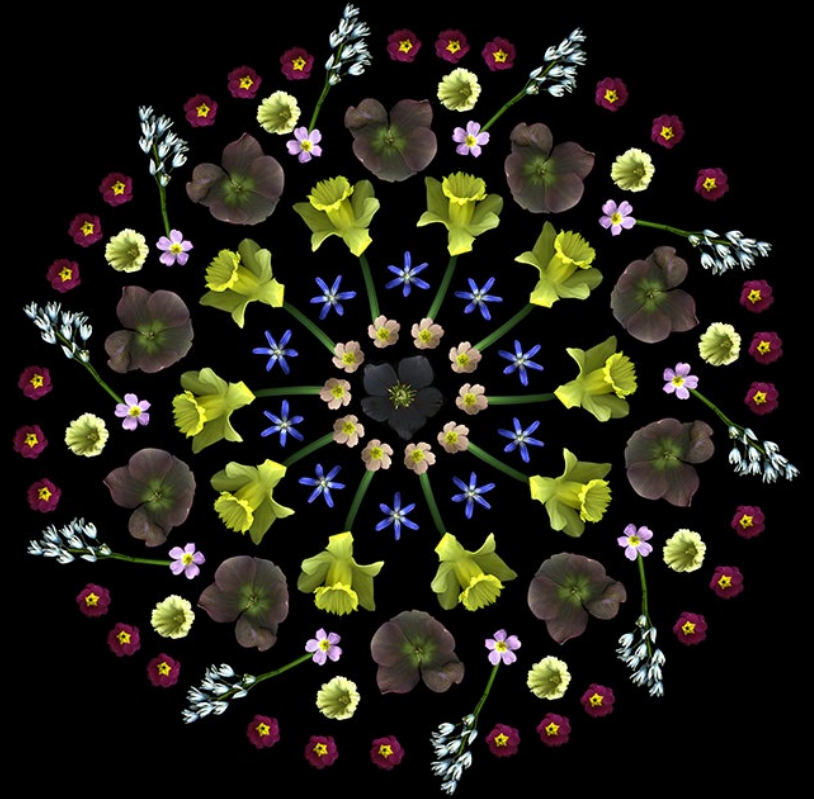


Scan Art



Craig Cramer

cdc25@cornell.edu

ellishollow.remarc.com

Instagram: @cdcramer42

Beginnings &
bouquets

Plucked for Portraits, Gardens' Bounty

By KEN DRUSE APRIL 7, 2005



ON my list of most useful garden tools, some people might be surprised to find a camera. A camera won't prune a rosebush or dig a hole, but for design help it can be essential. Through its single eye I discover things that are not visible when I walk through my garden: things that can be improved, moved or removed. I can also snap records of successful experiments and other plantings to remember and repeat. And photographs, with dates and notes scribbled on the backs, slip nicely into my garden journal.

"A photograph can freeze a moment in the garden," said Ellen Hoverkamp, a fine art photographer in West Haven, Conn., who first recognized the appeal of garden still lifes about 15 years ago.

But she doesn't use the sort of point-and-shoot, automatic-focus digital camera that I find so useful in capturing these moments.

Ignoring her camera altogether, Ms. Hoverkamp works directly on a flatbed scanner, similar to the kind used in homes and offices, to make haunting garden souvenirs.





















Bloom days soon





Fiddling
around













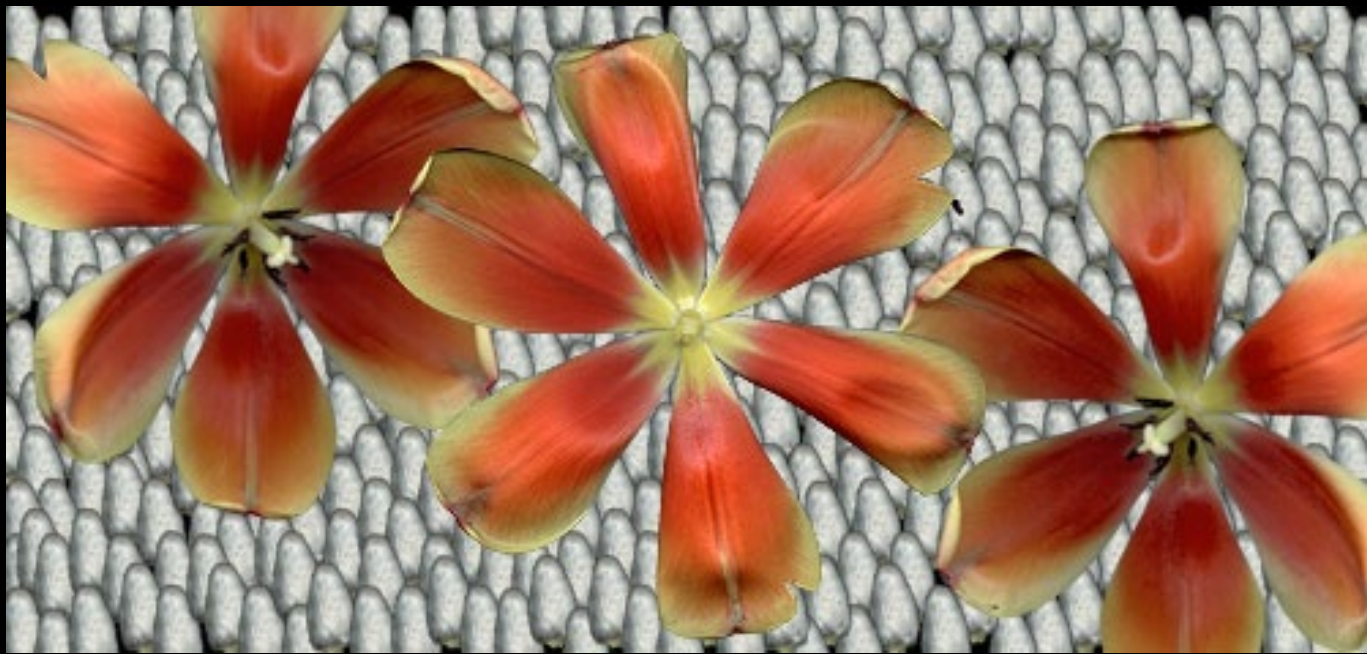










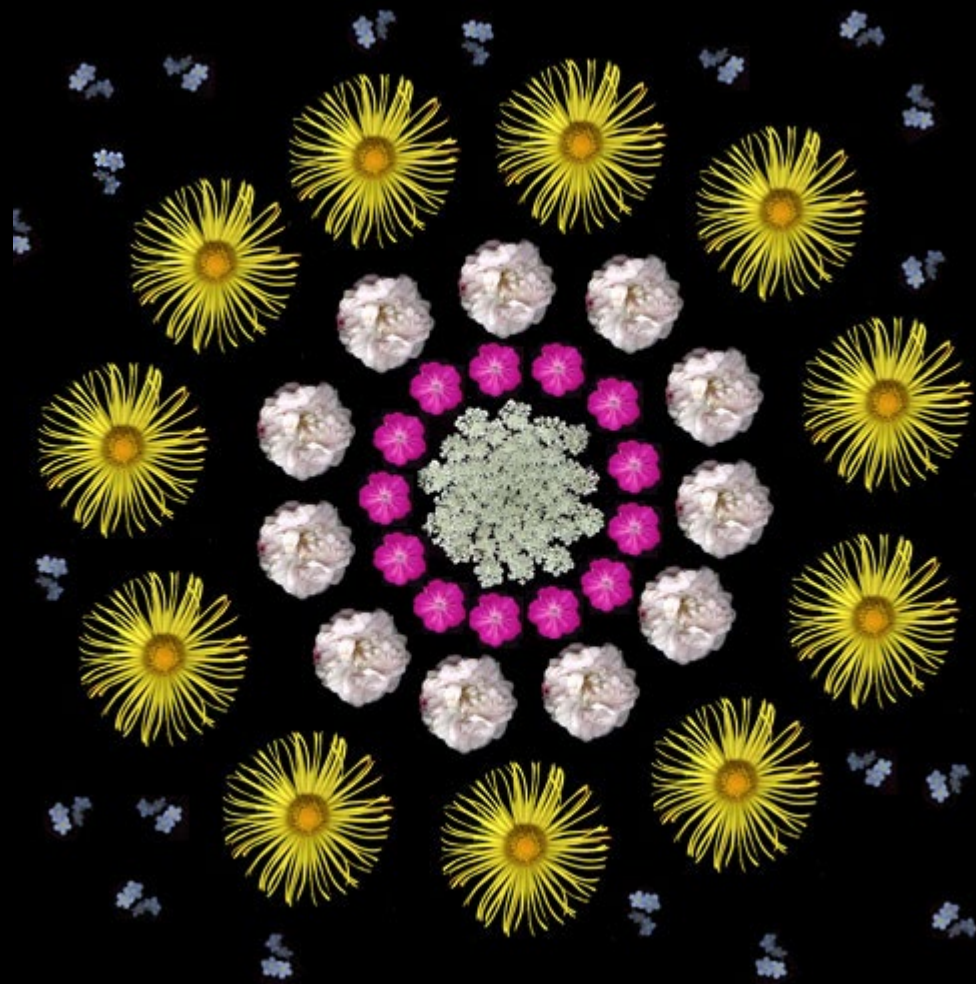












4-squares &
kaleidoscopes

I learned that I can arrange scans so that they rendered mandala-like designs when mirrored.



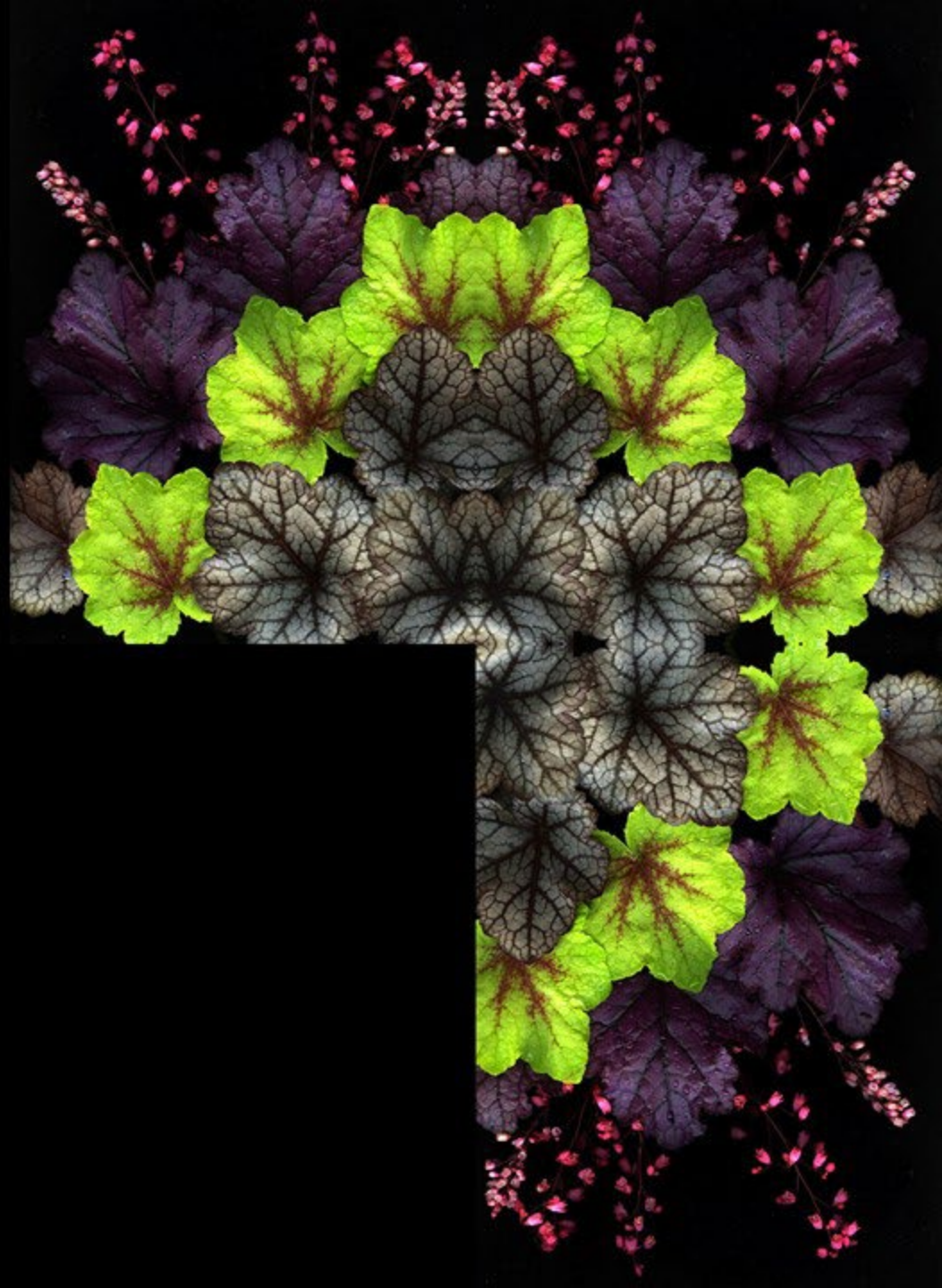
I learned that I can arrange scans so that they rendered mandala-like designs when mirrored.



I learned that I can arrange scans so that they rendered mandala-like designs when mirrored.



I learned that I can arrange scans so that they rendered mandala-like designs when mirrored.



I learned that I can arrange scans so that they rendered mandala-like designs when mirrored.



I learned that I can arrange scans so that they rendered mandala-like designs when mirrored.









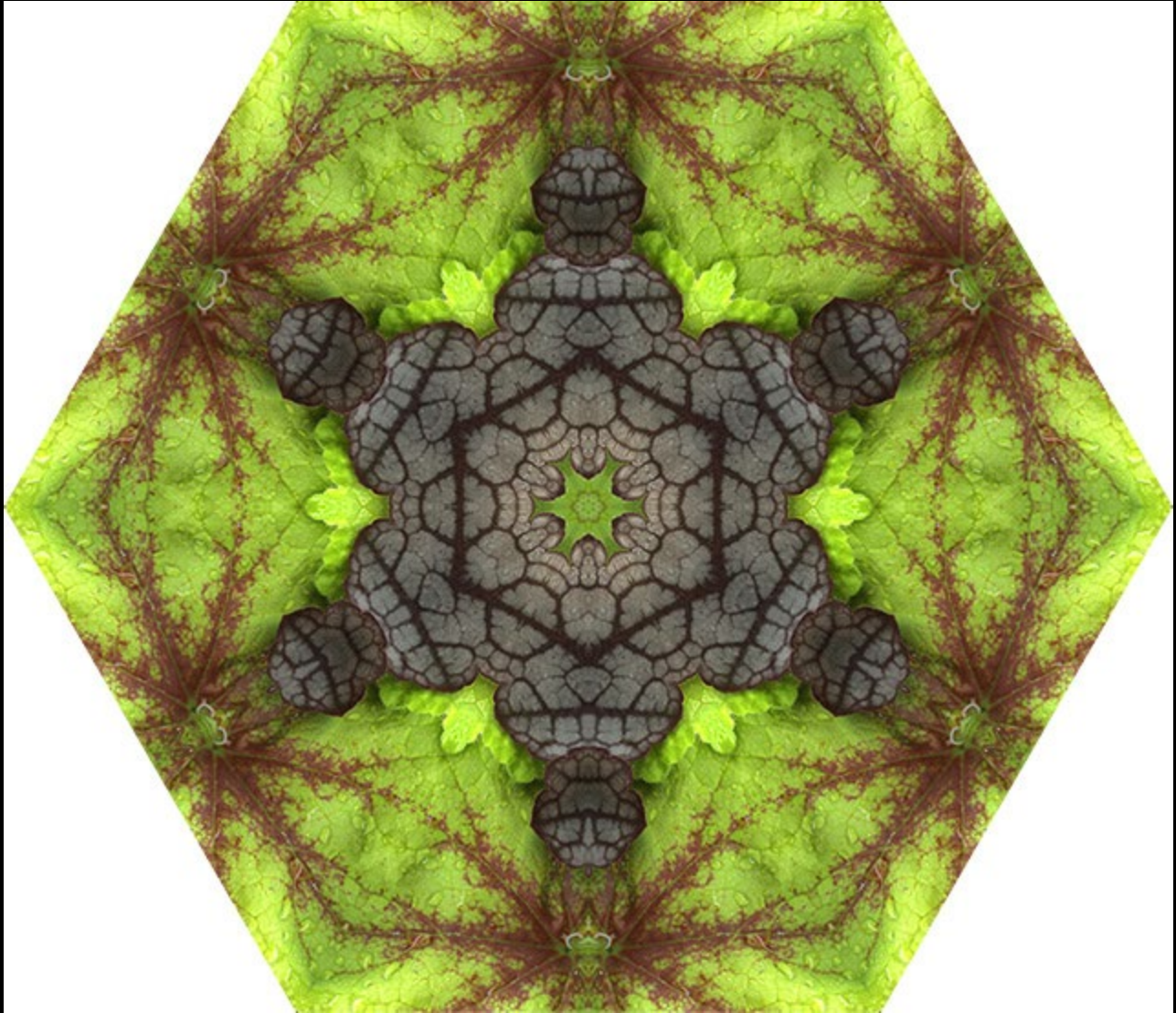


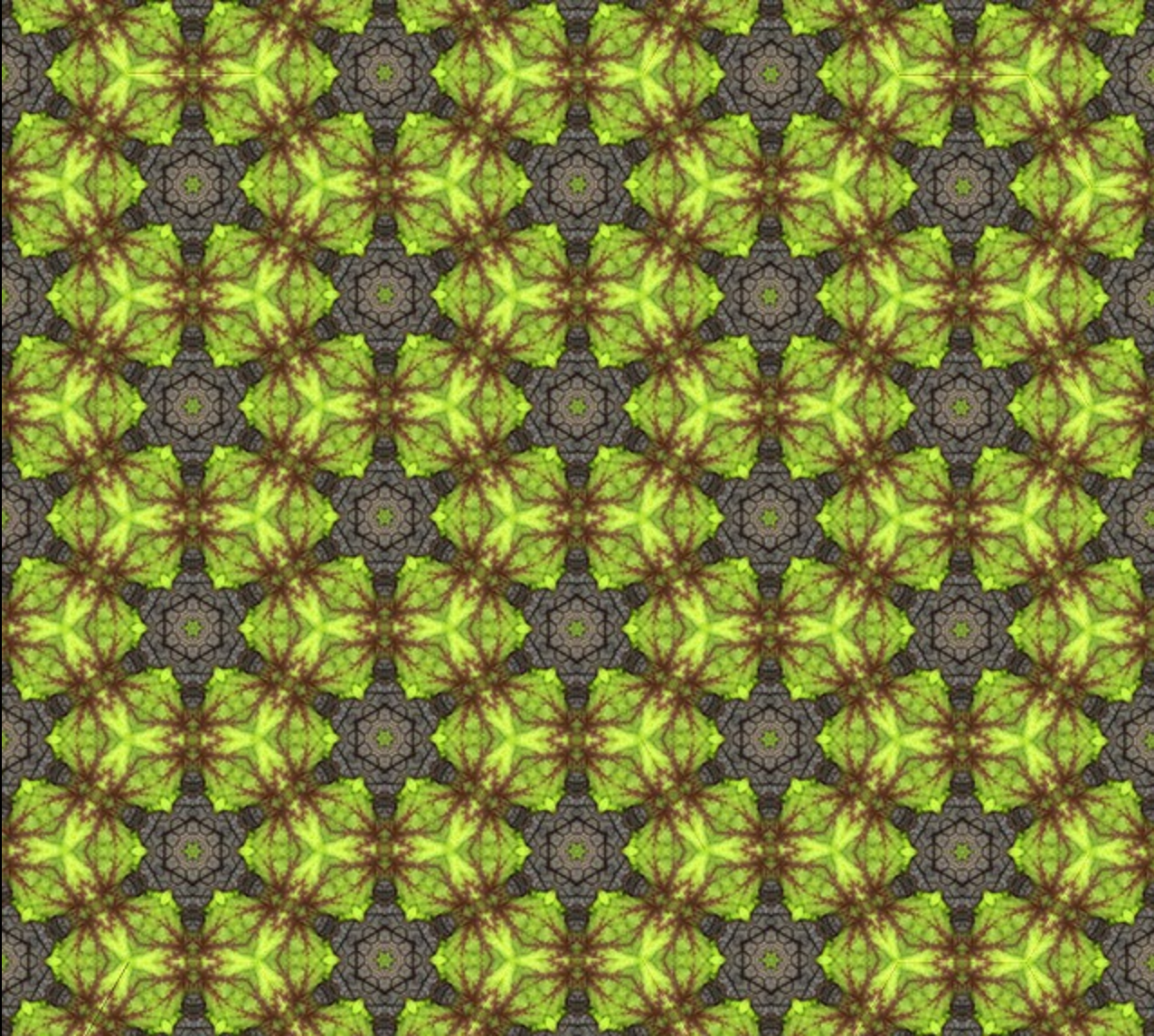






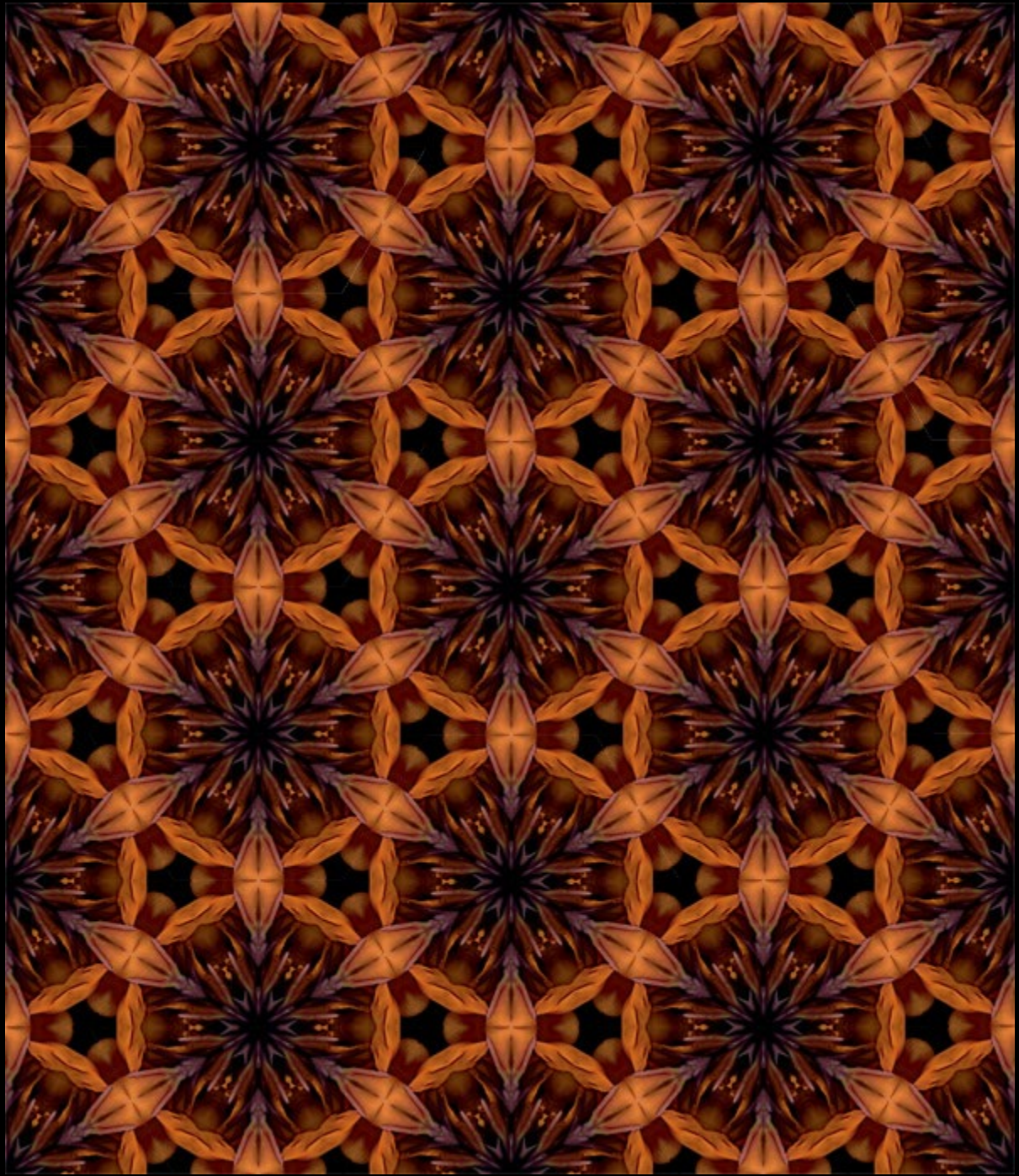




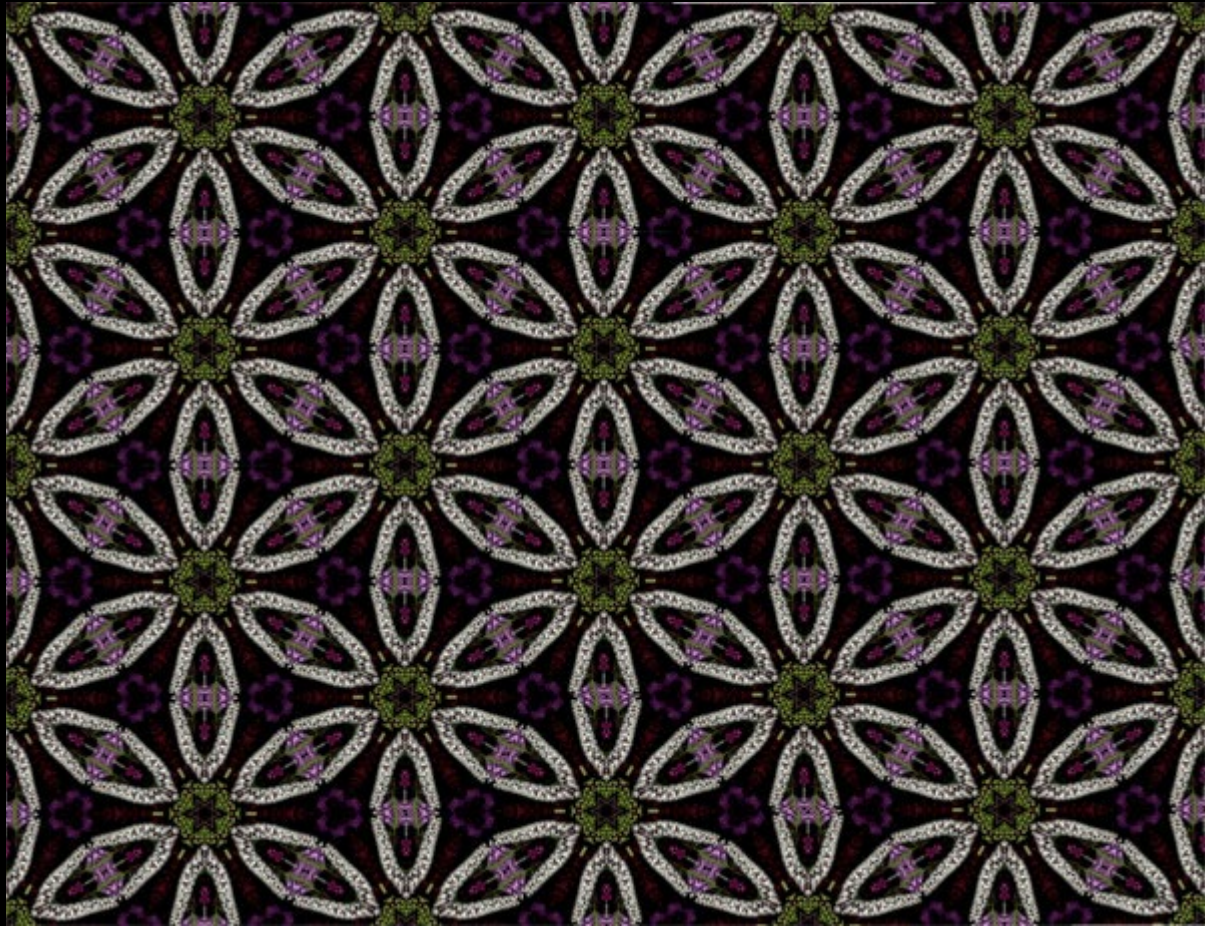


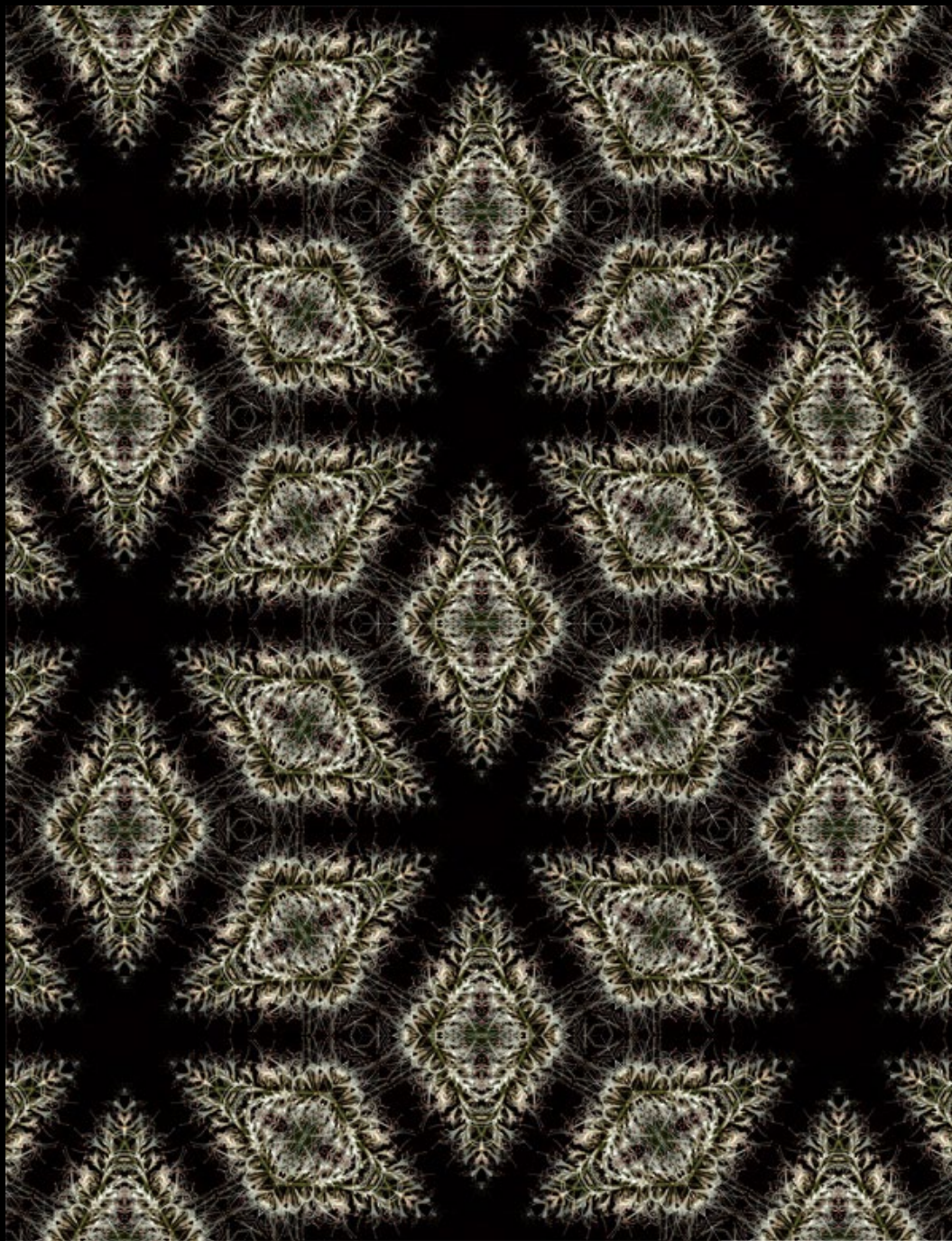
How to: <https://digital-photography-school.com/how-to-create-kaleidoscope-patterns-from-your-photos/>

Video: <https://youtu.be/P6p2KBpsqdk>















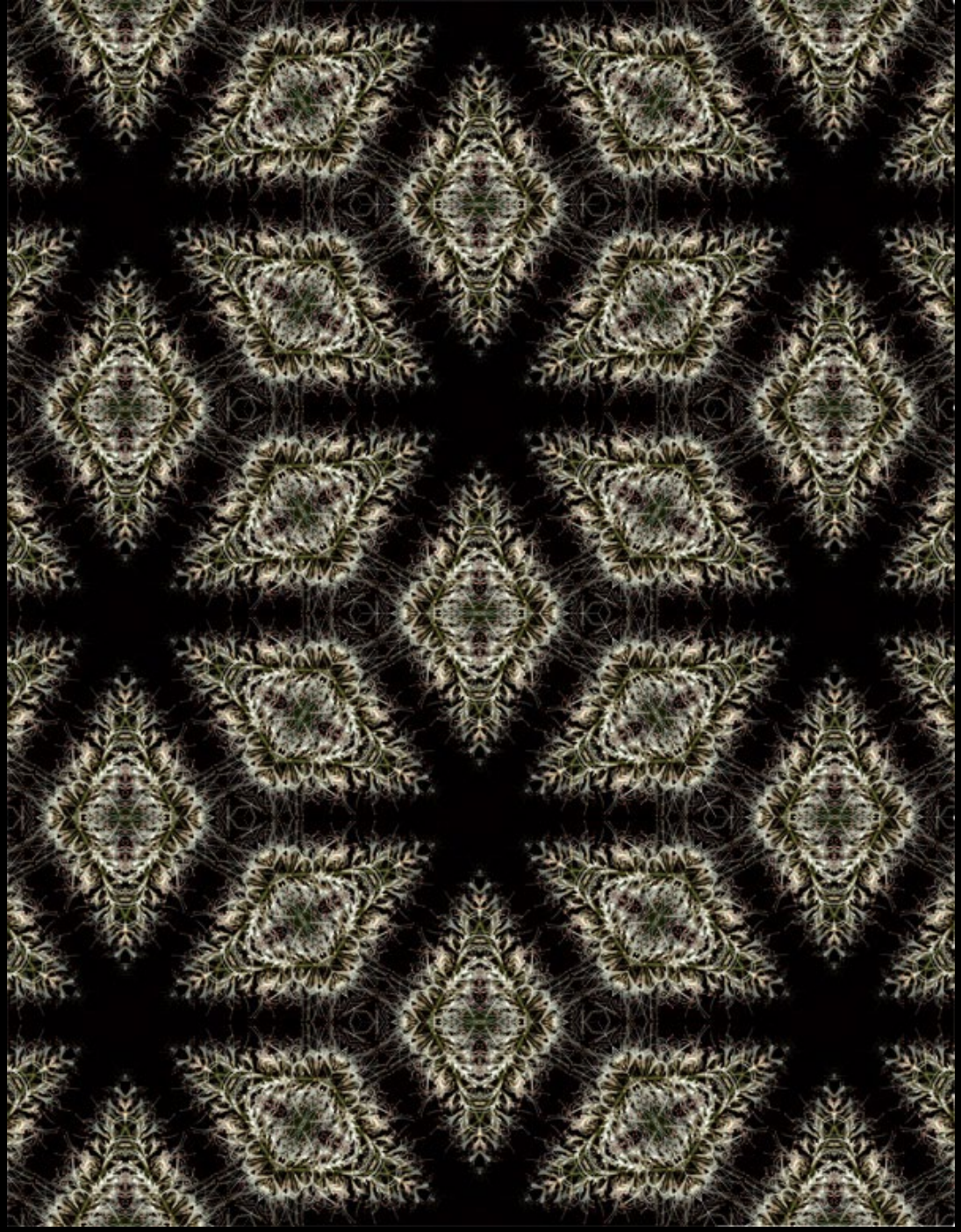




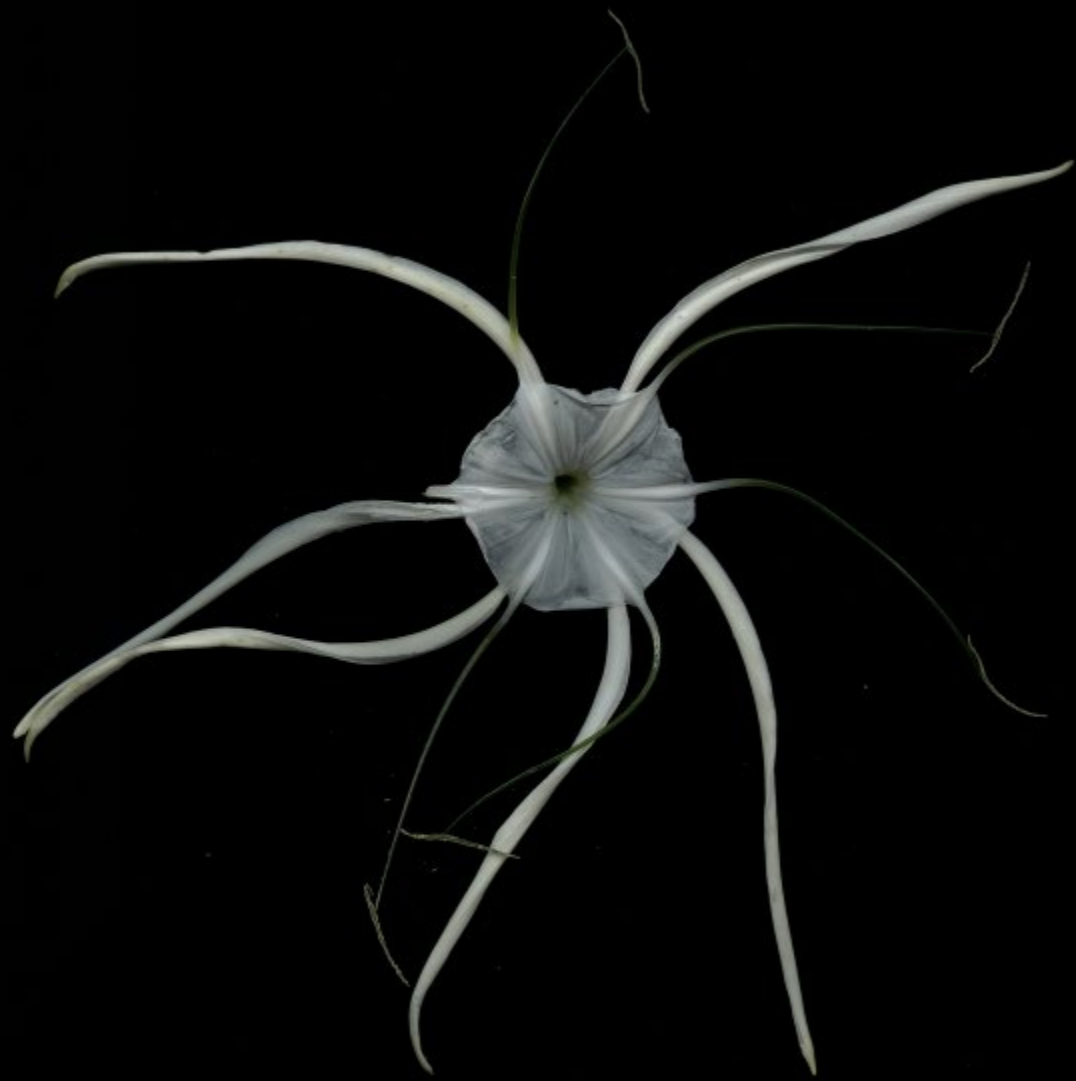
Plant portraits
and mandalas









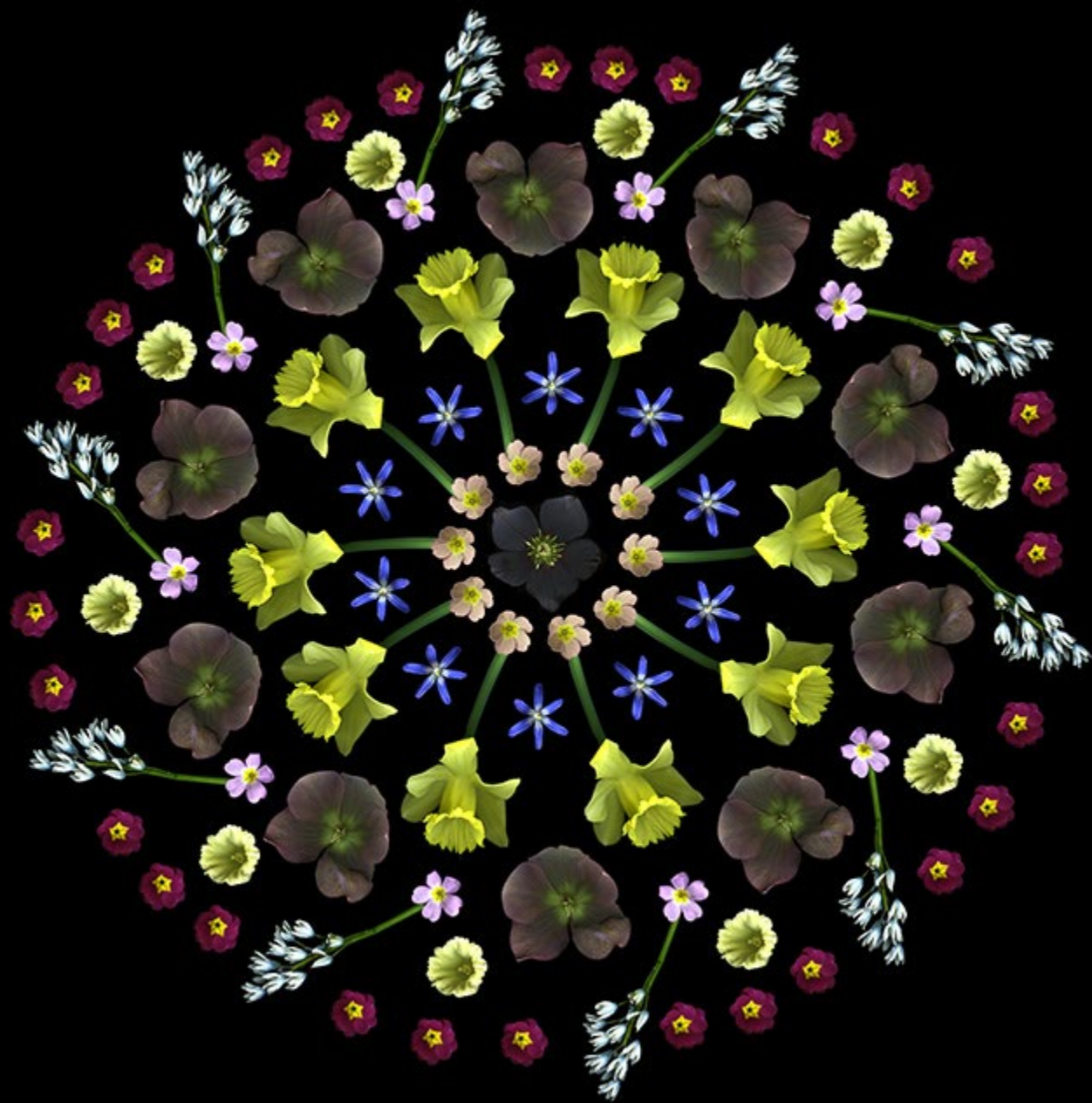




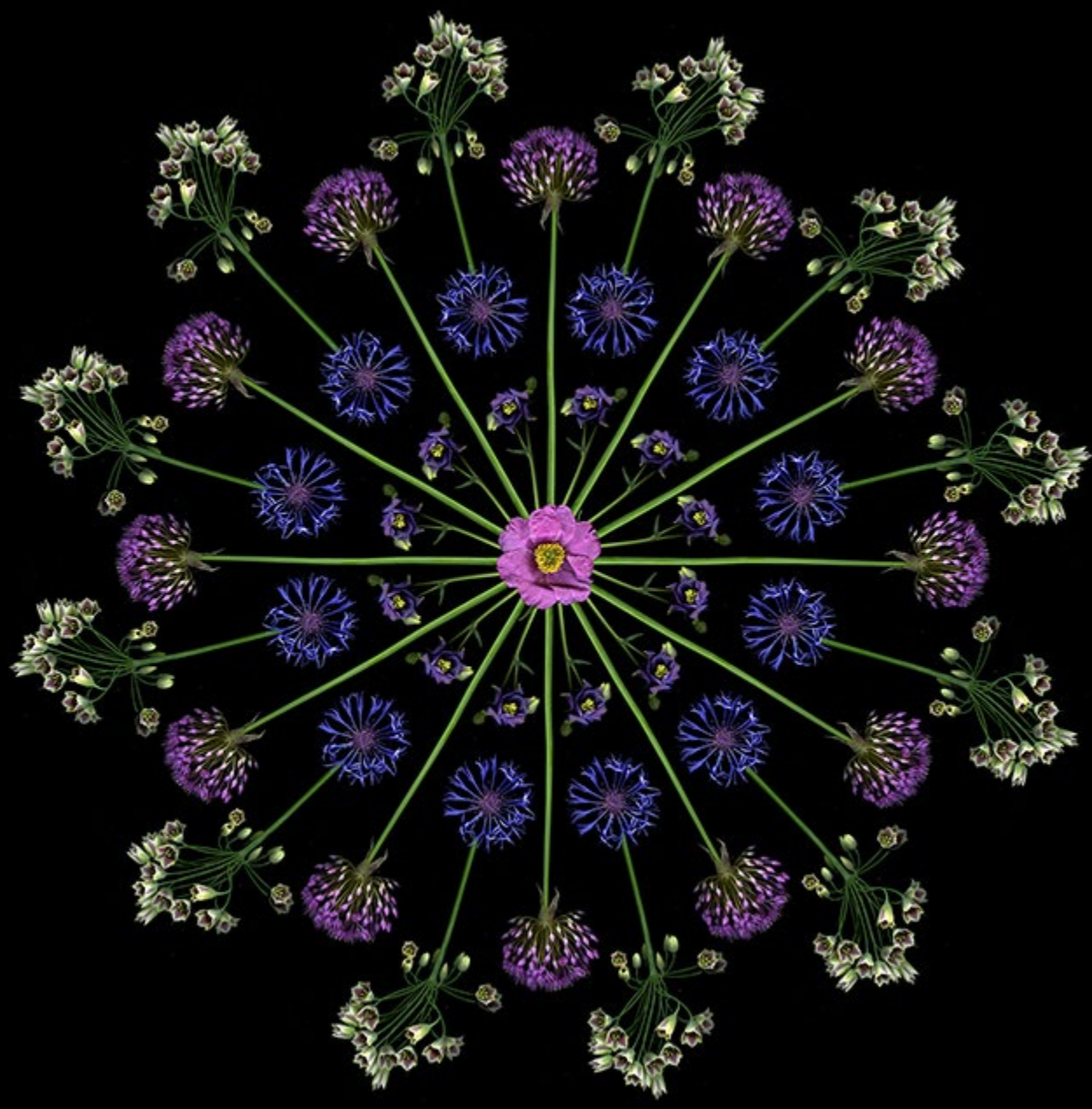
















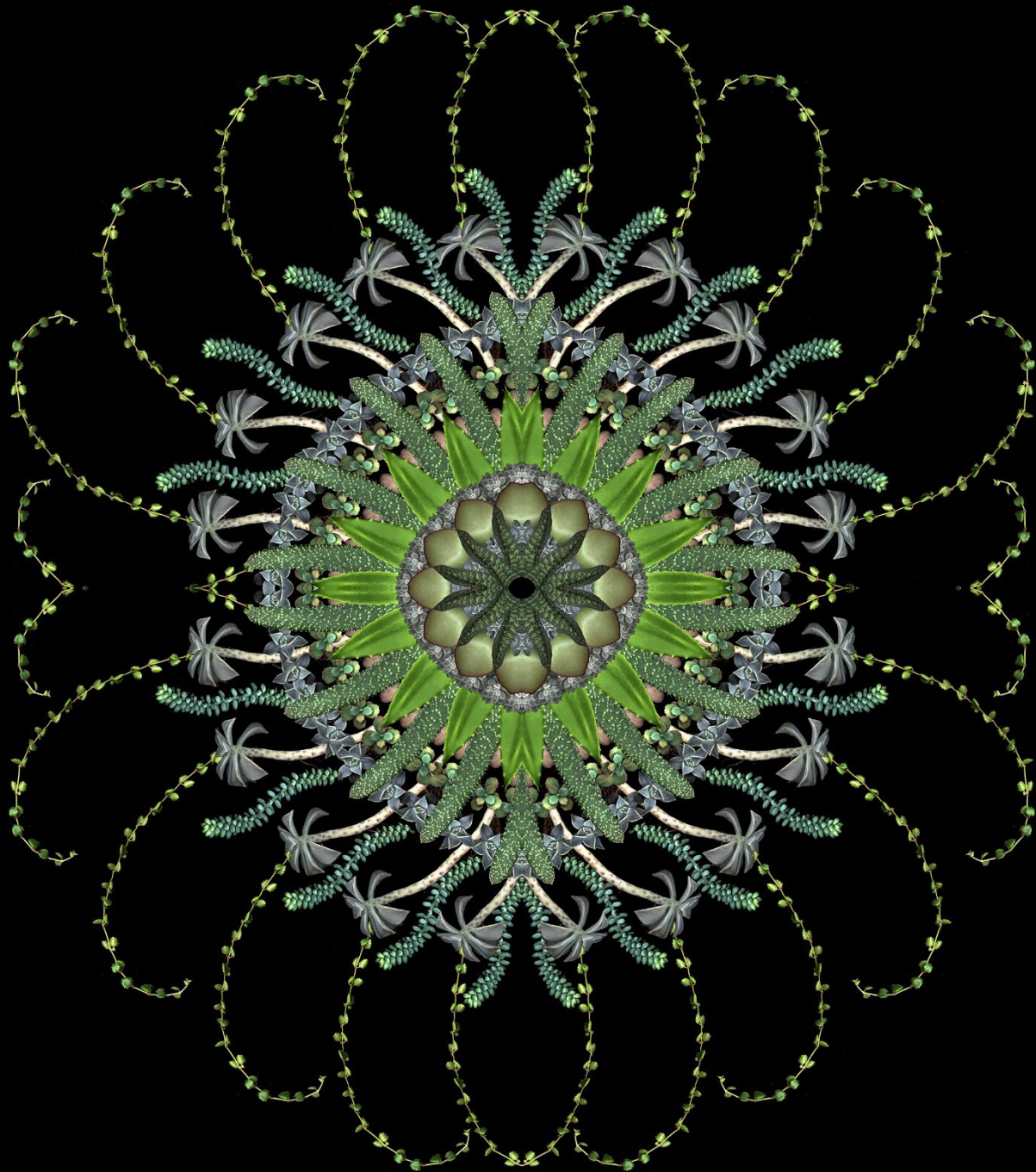














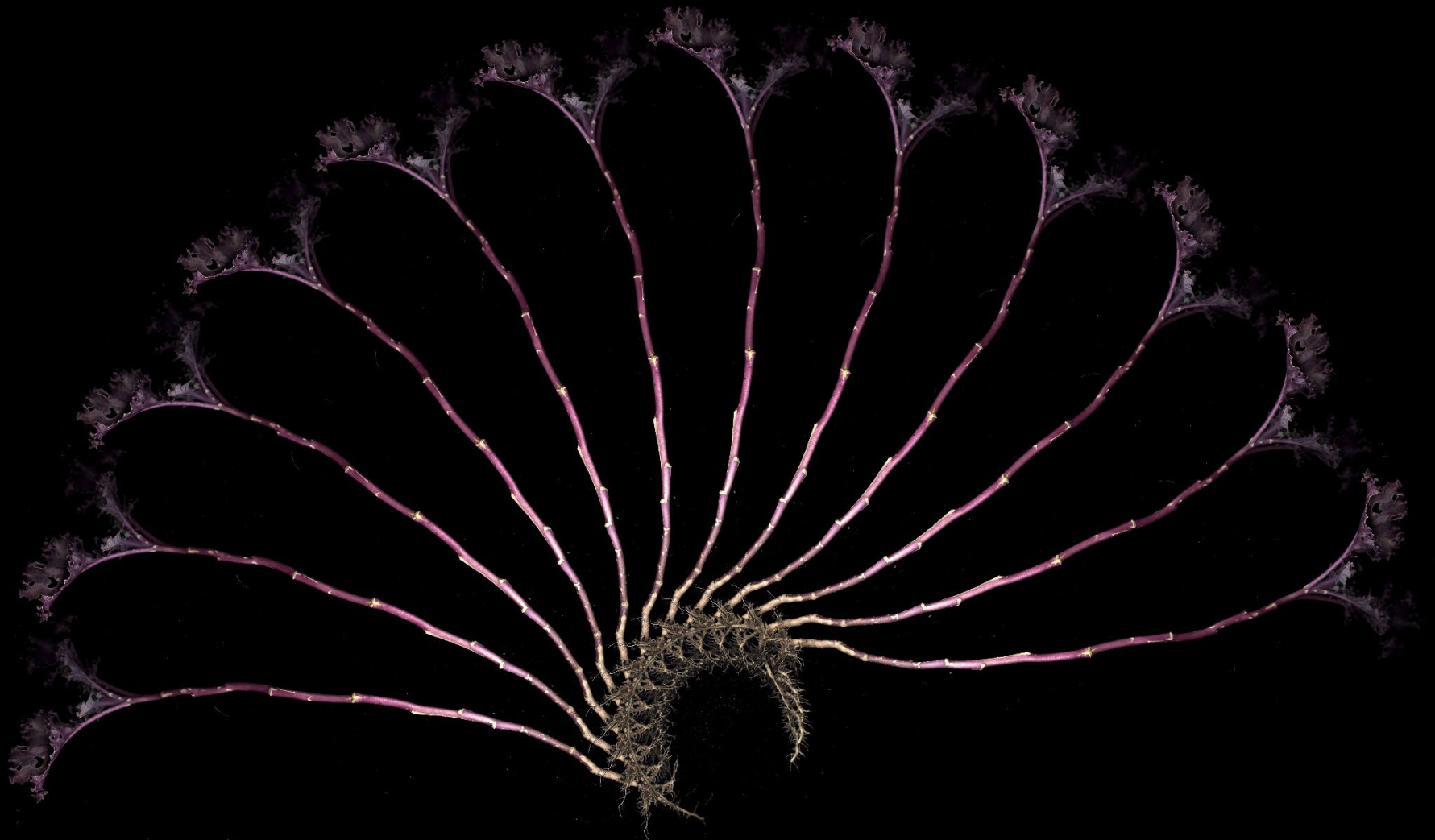


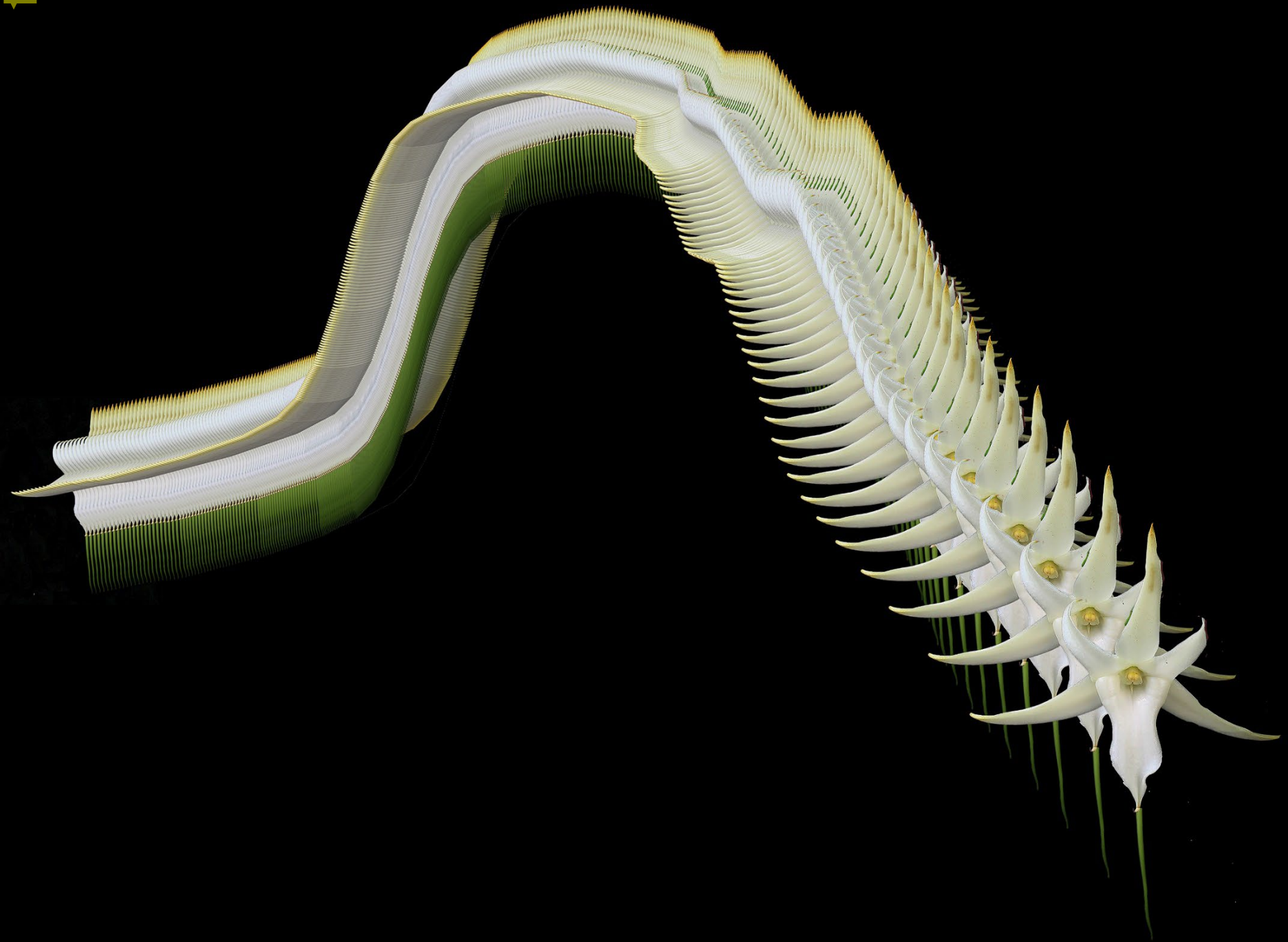


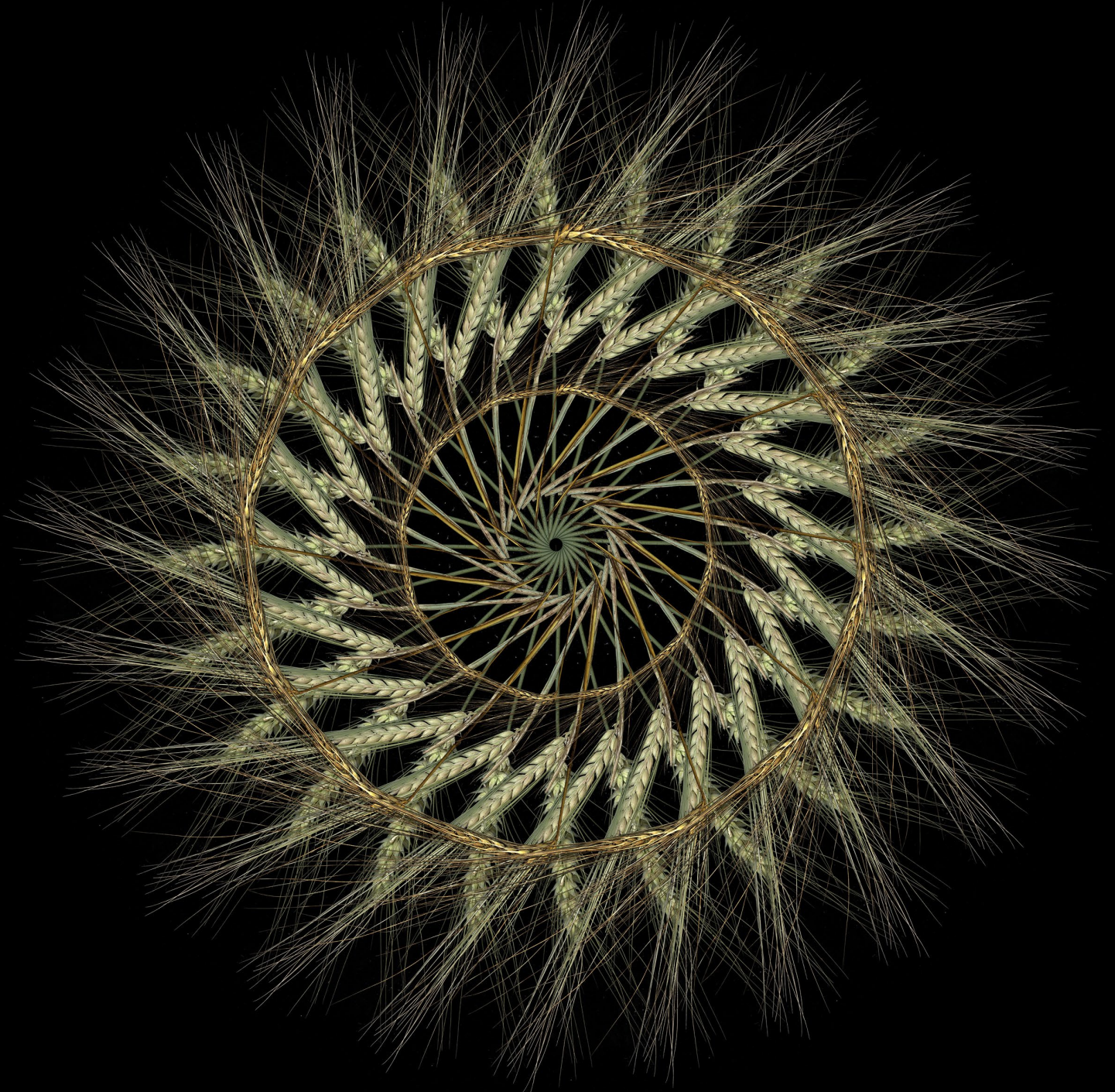


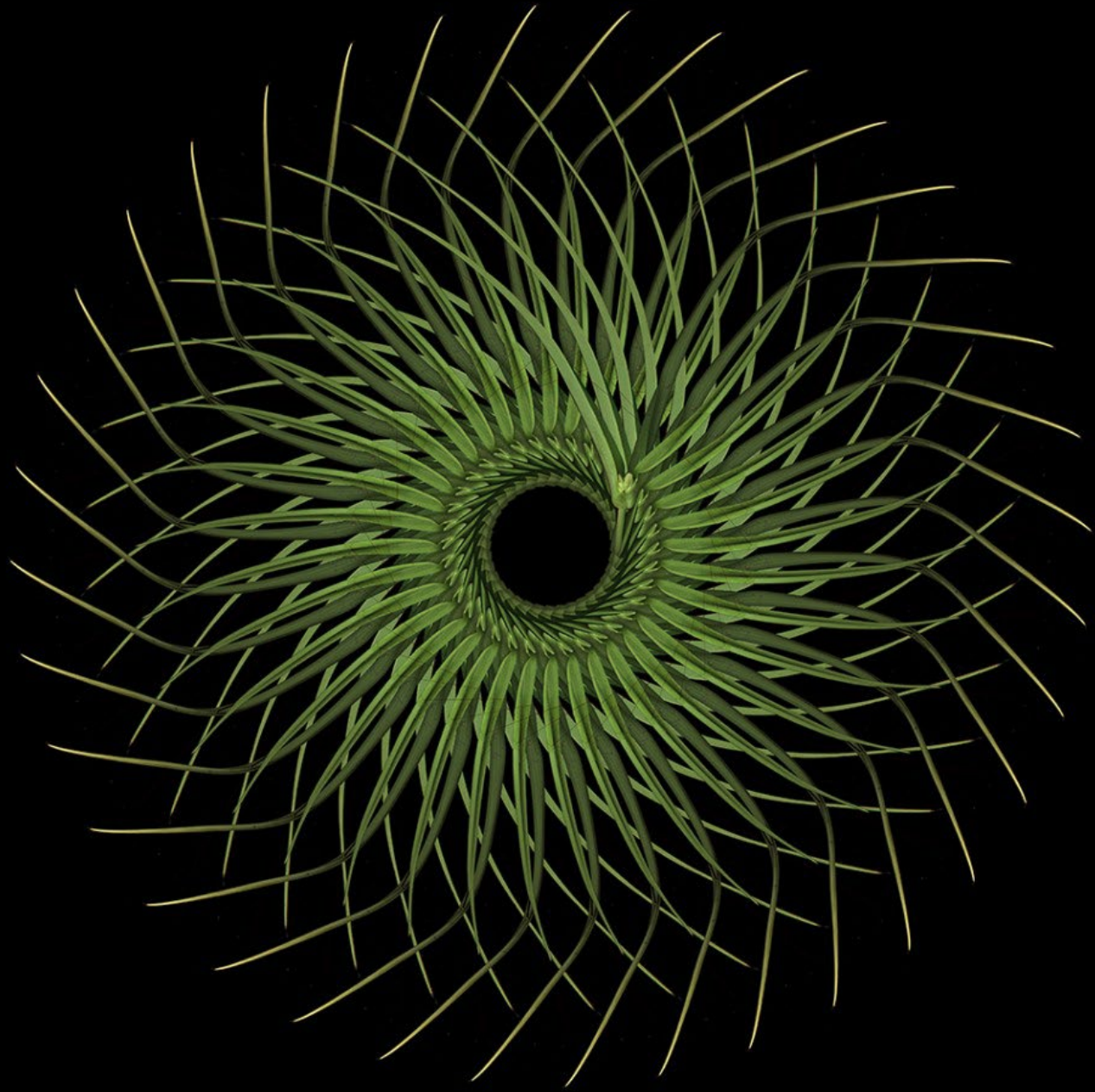


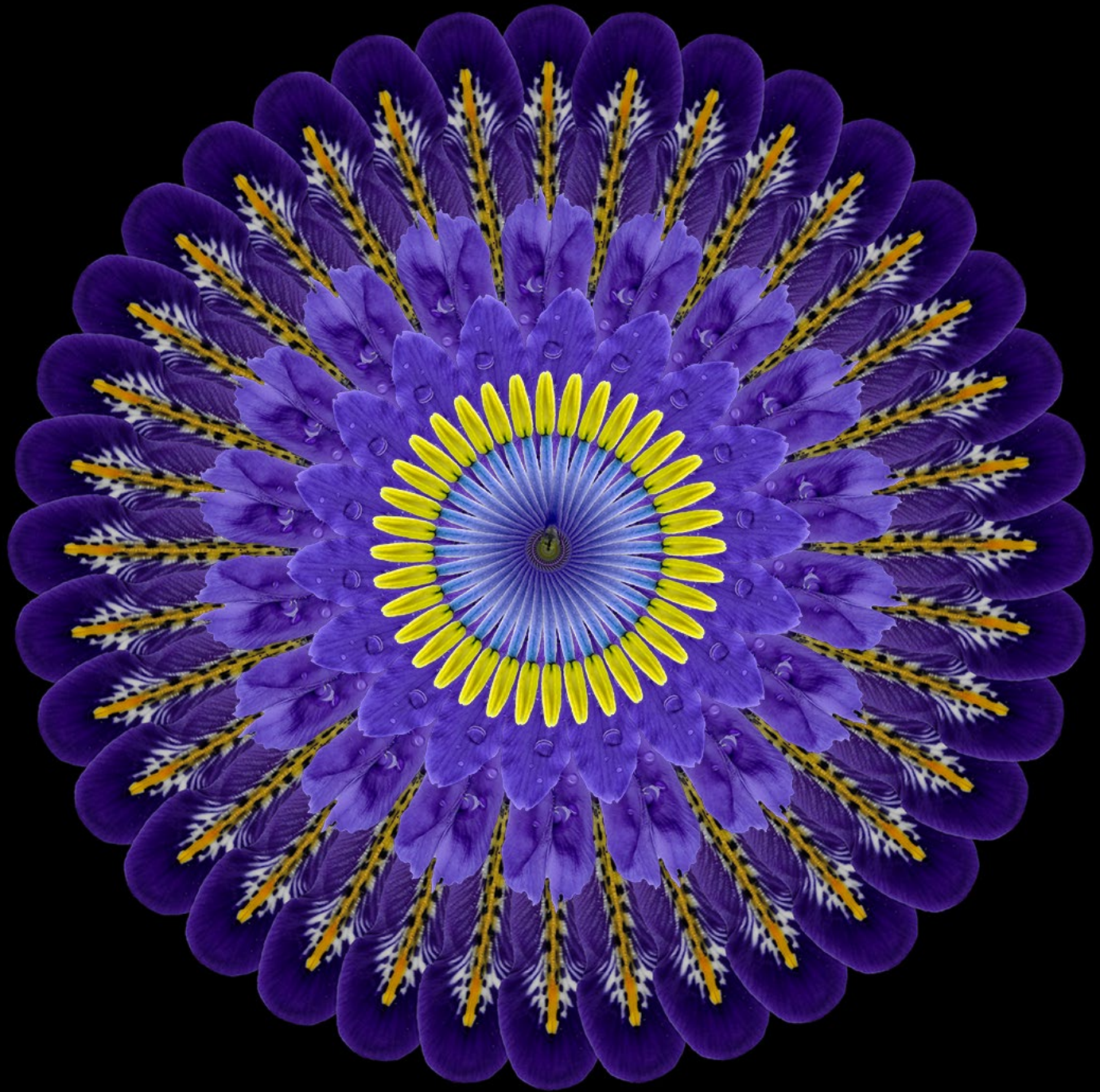


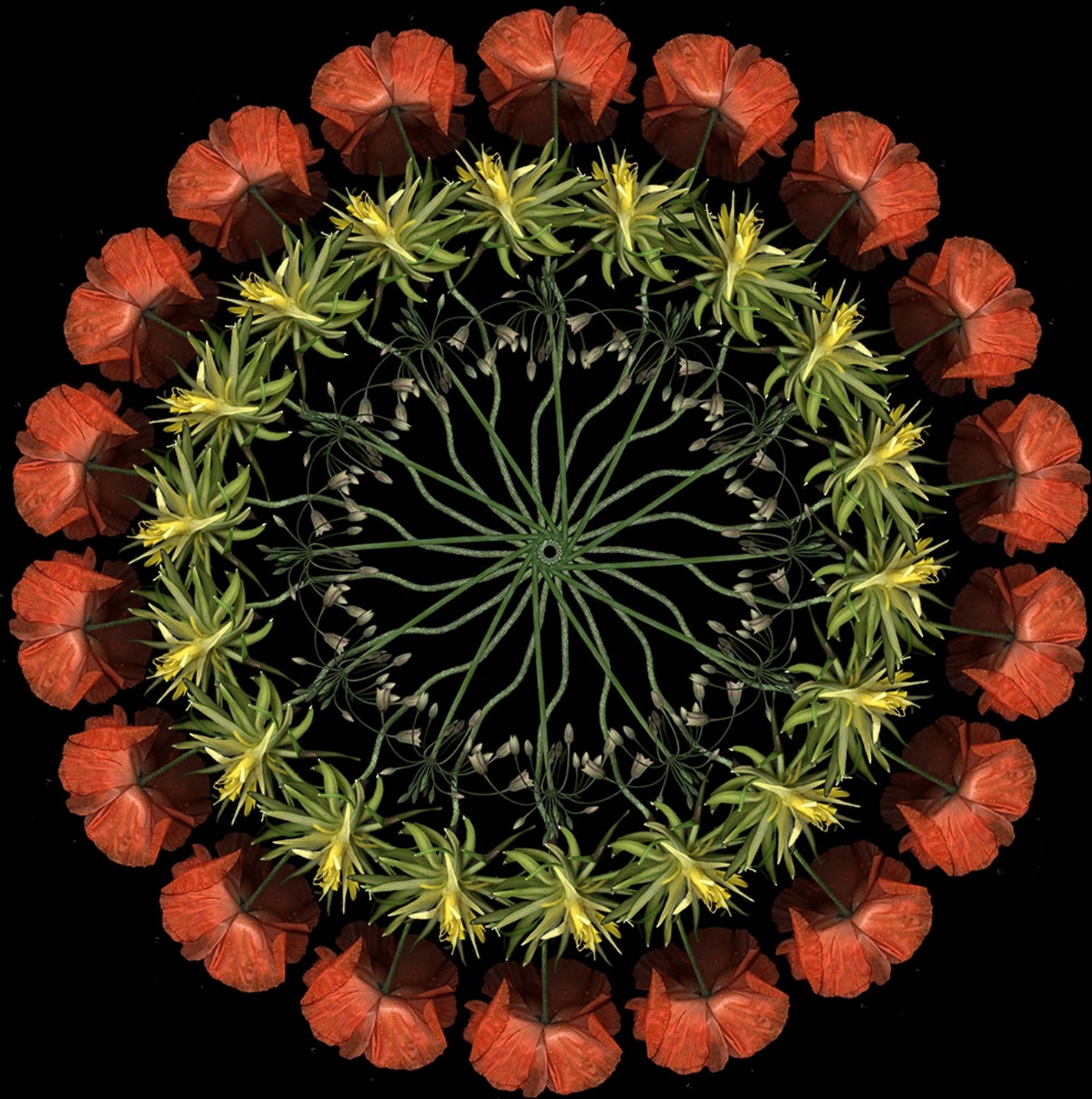




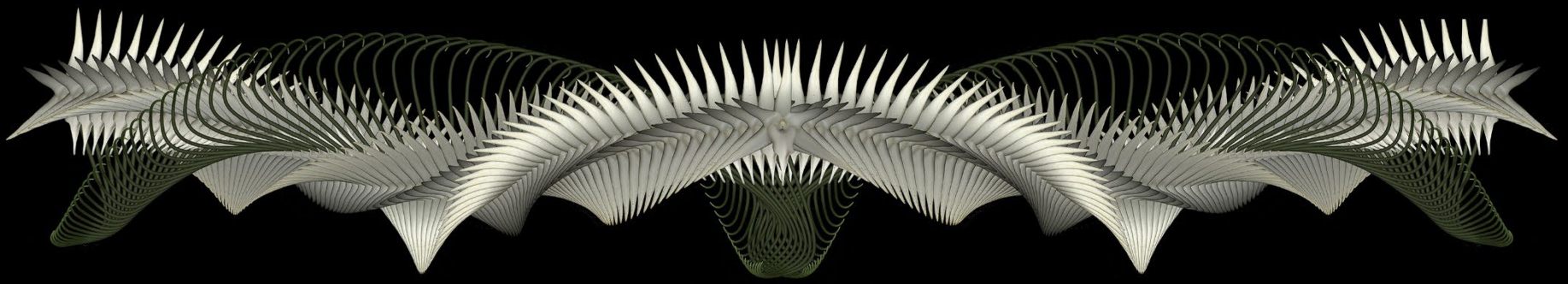
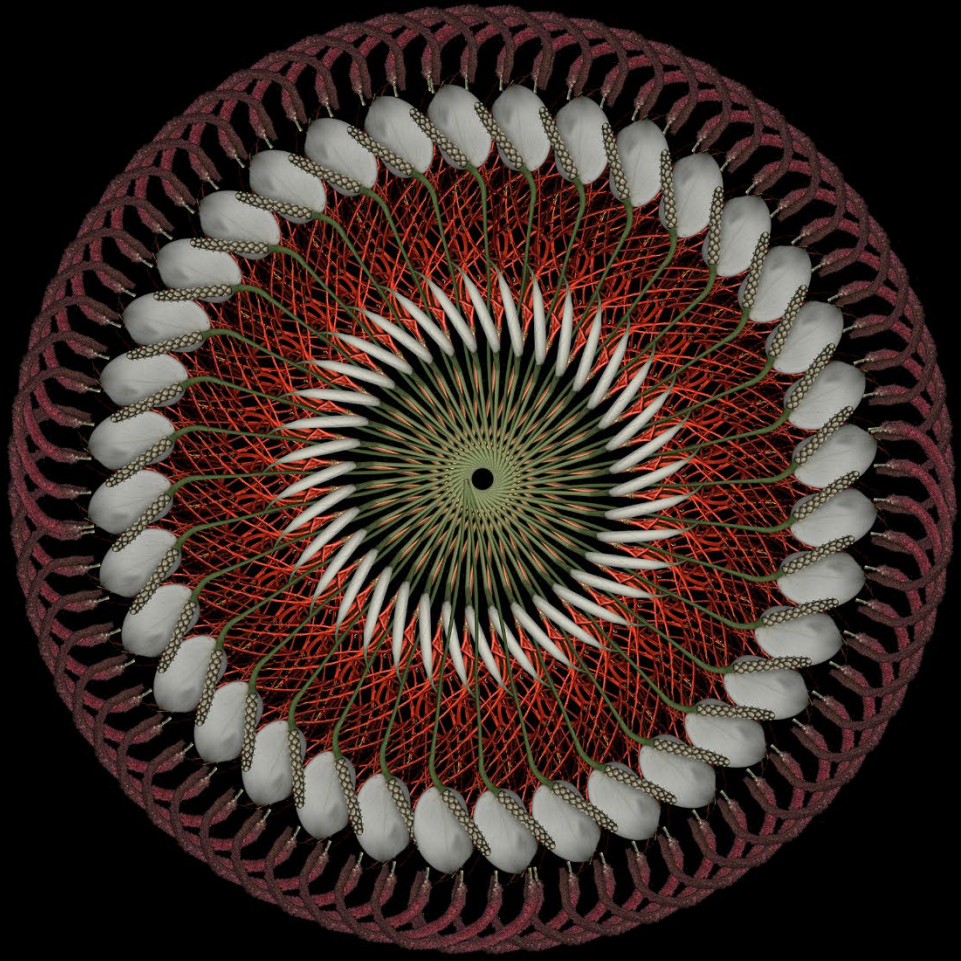




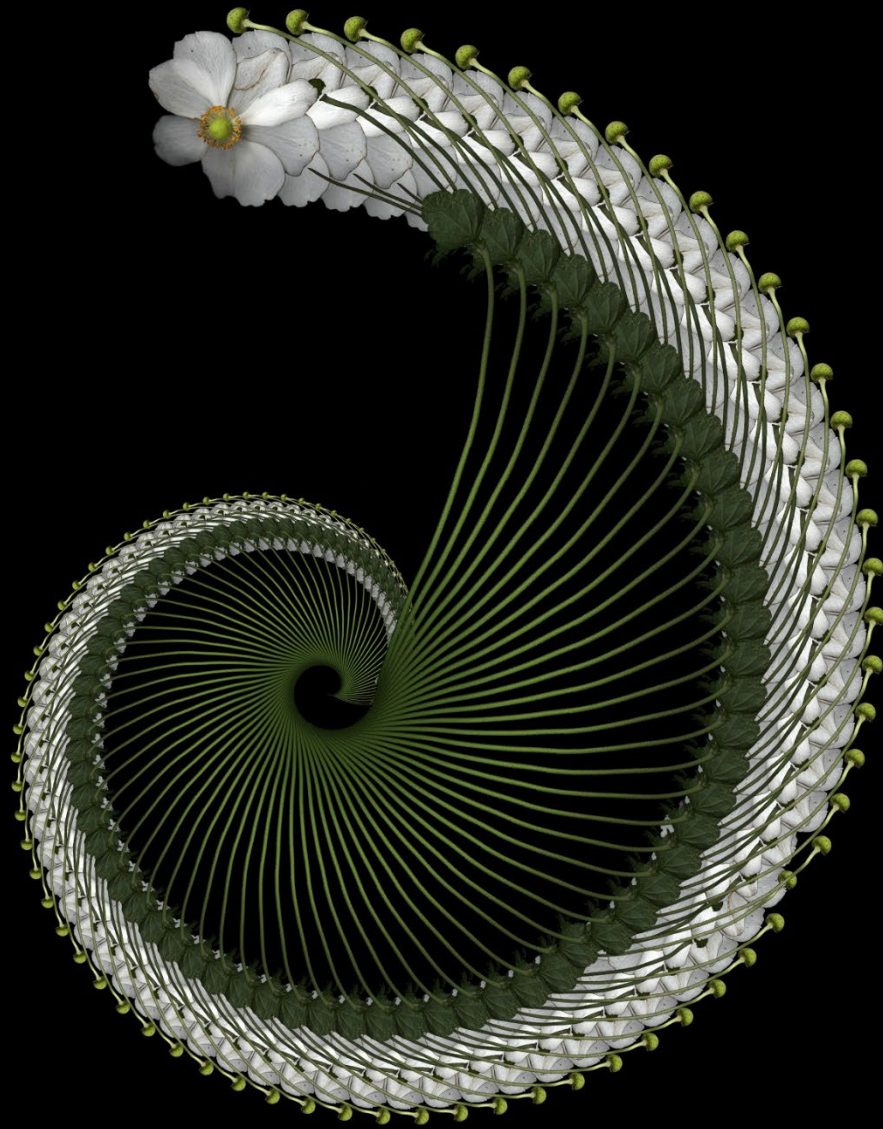






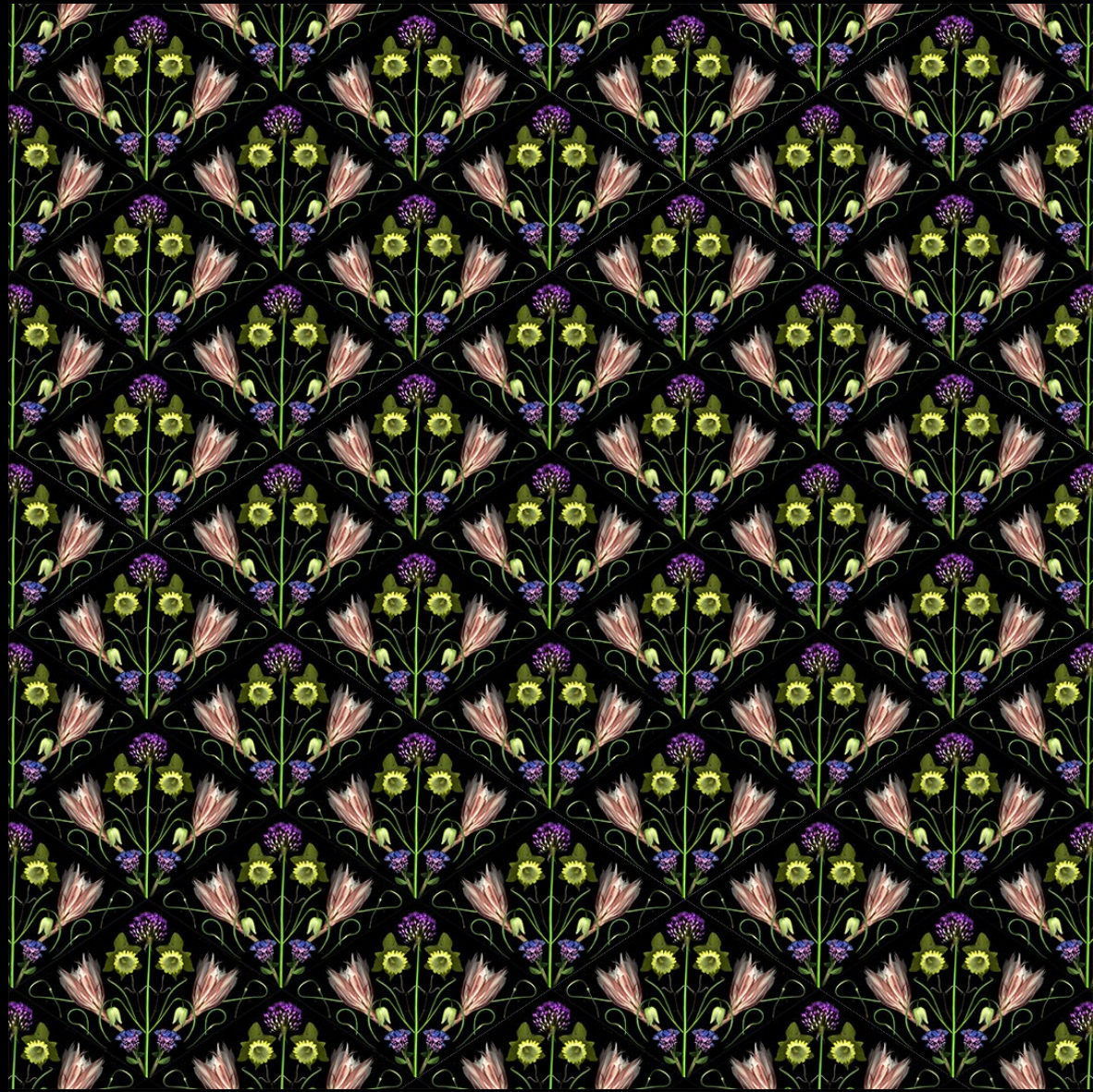


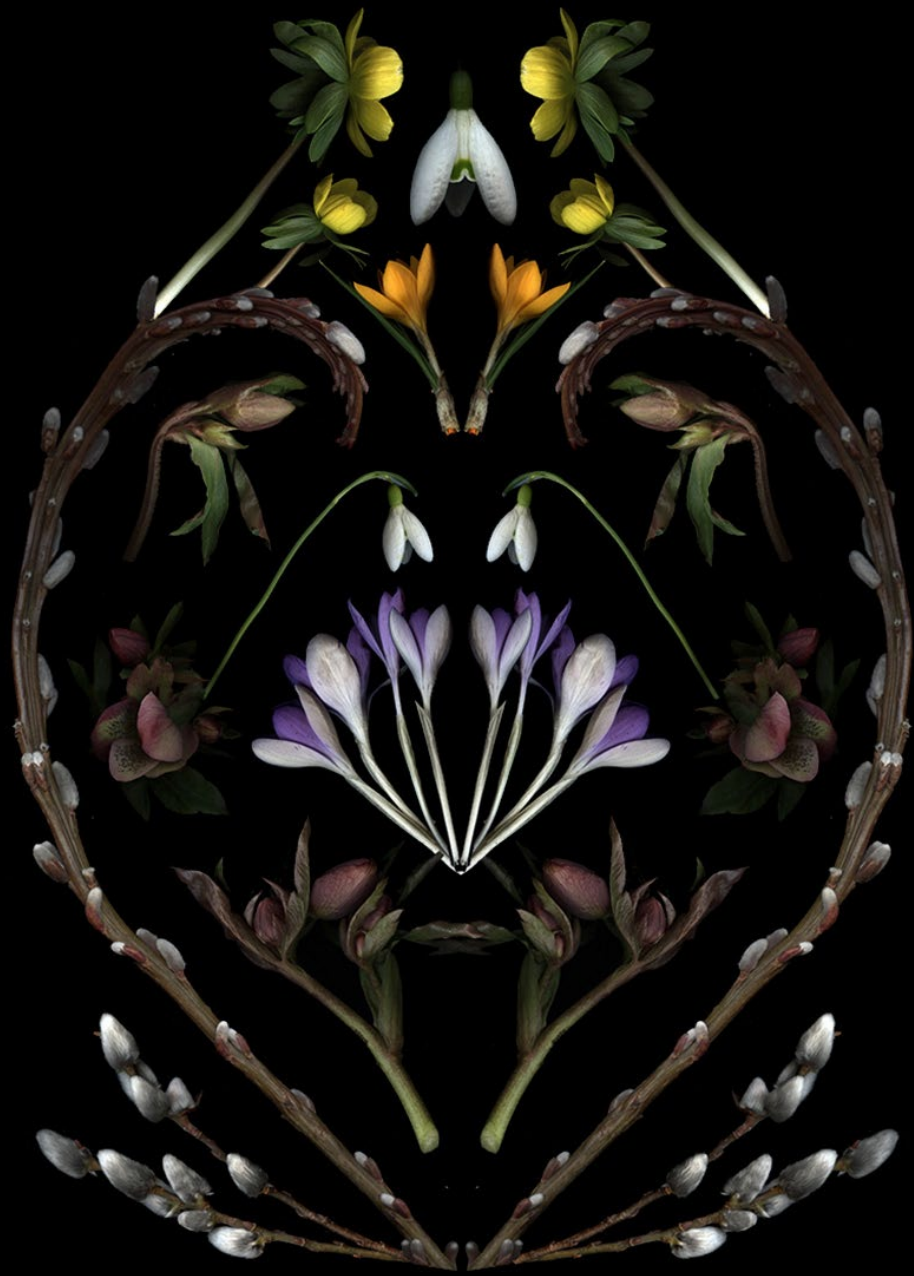


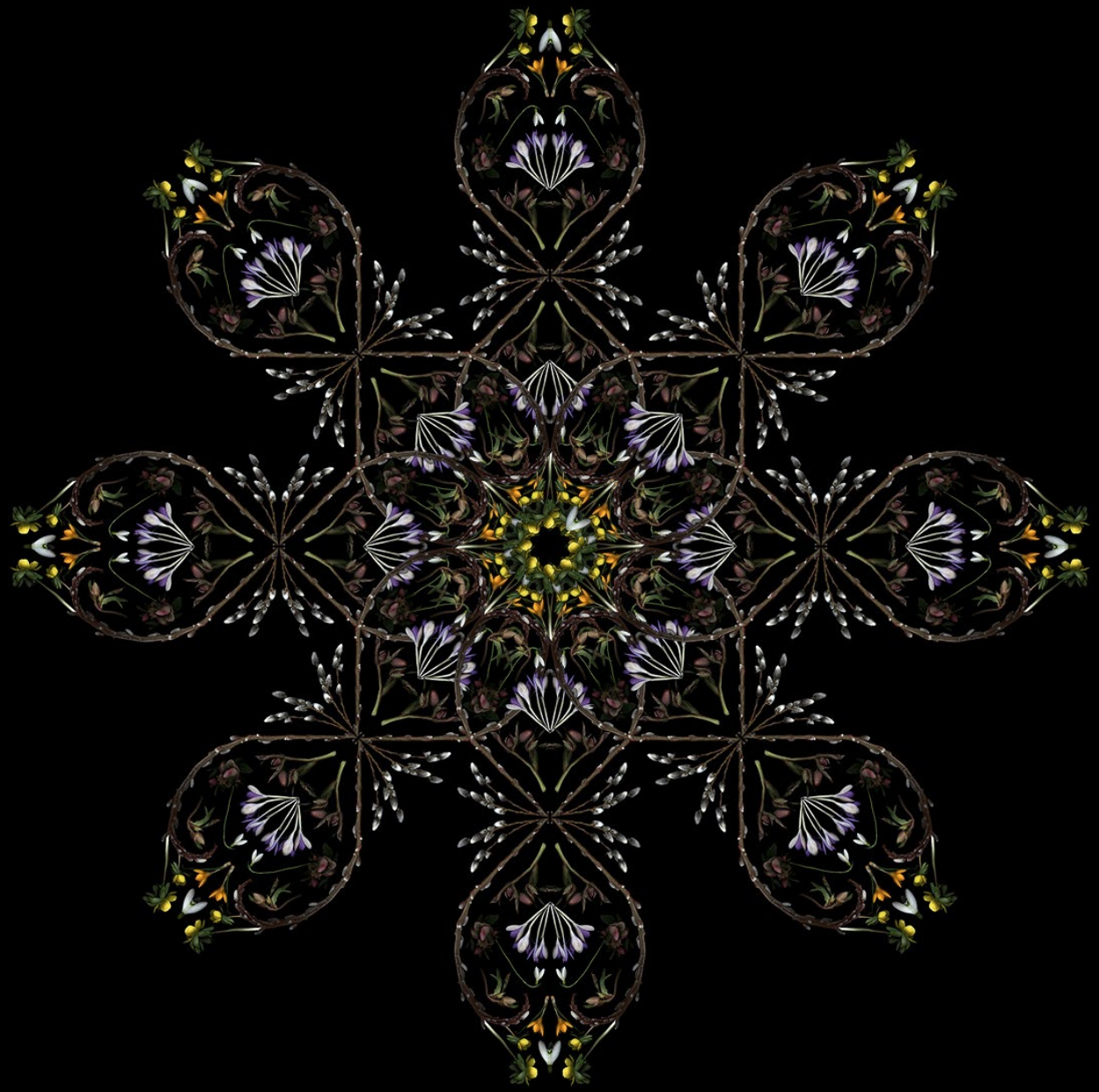






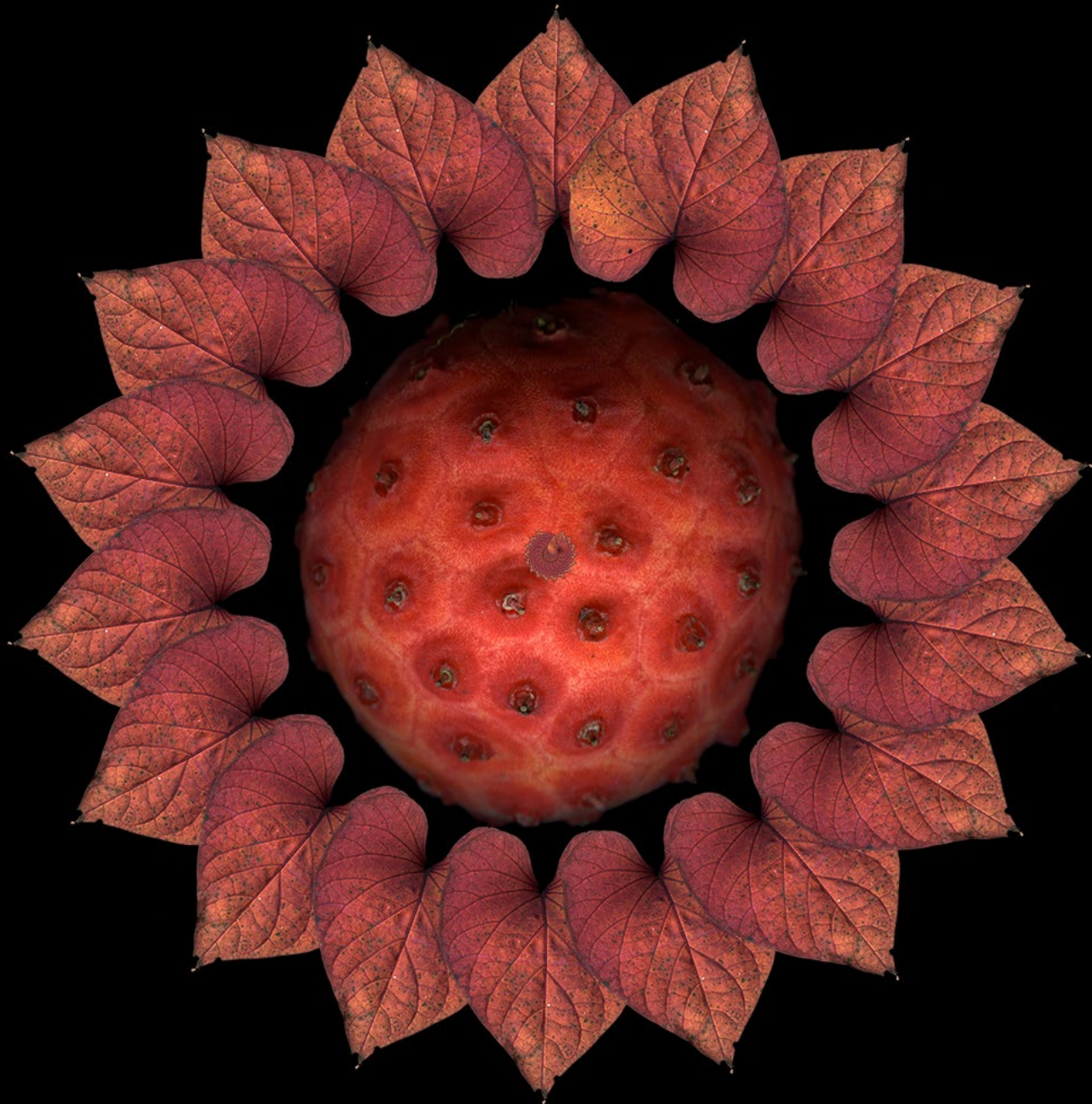


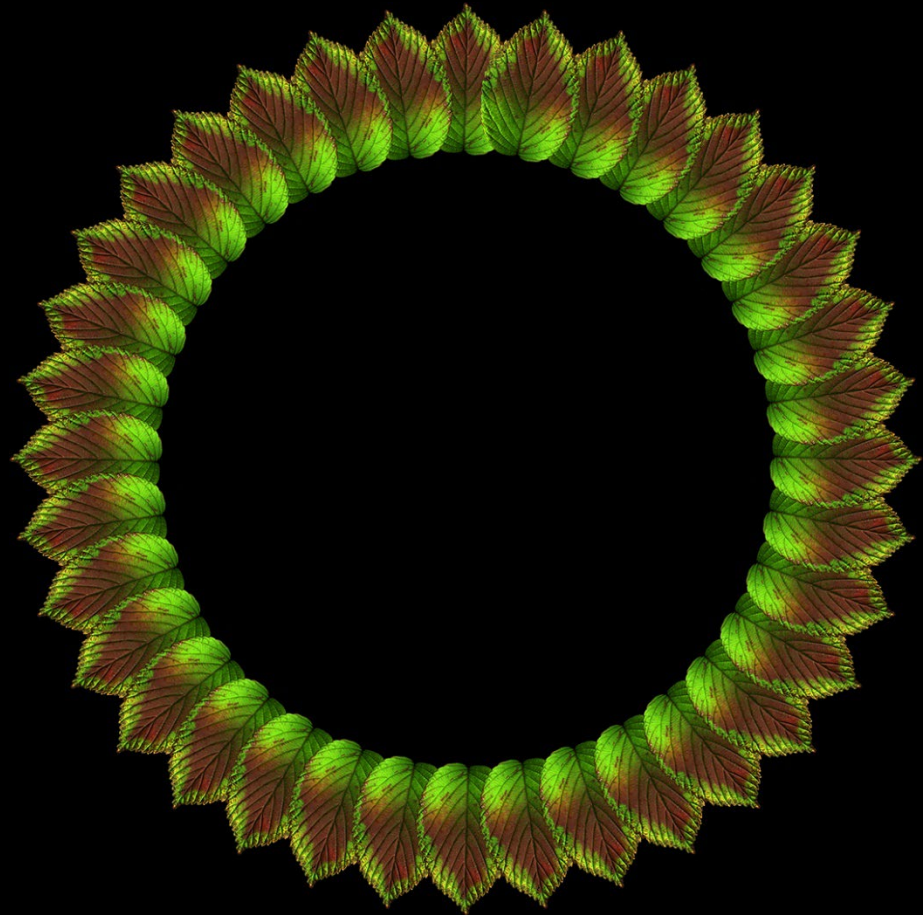




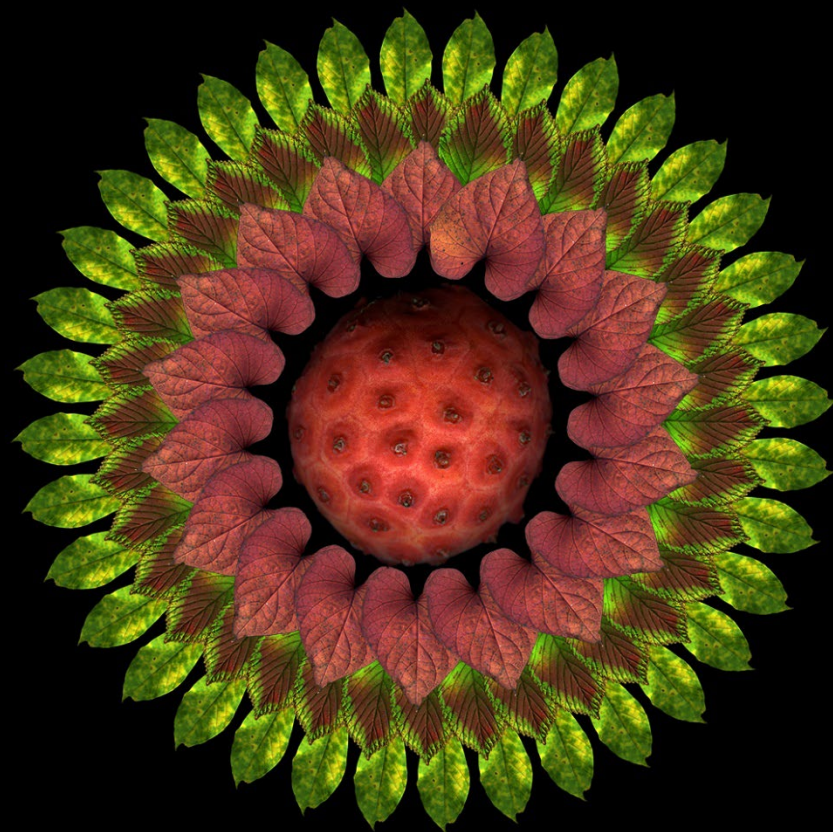


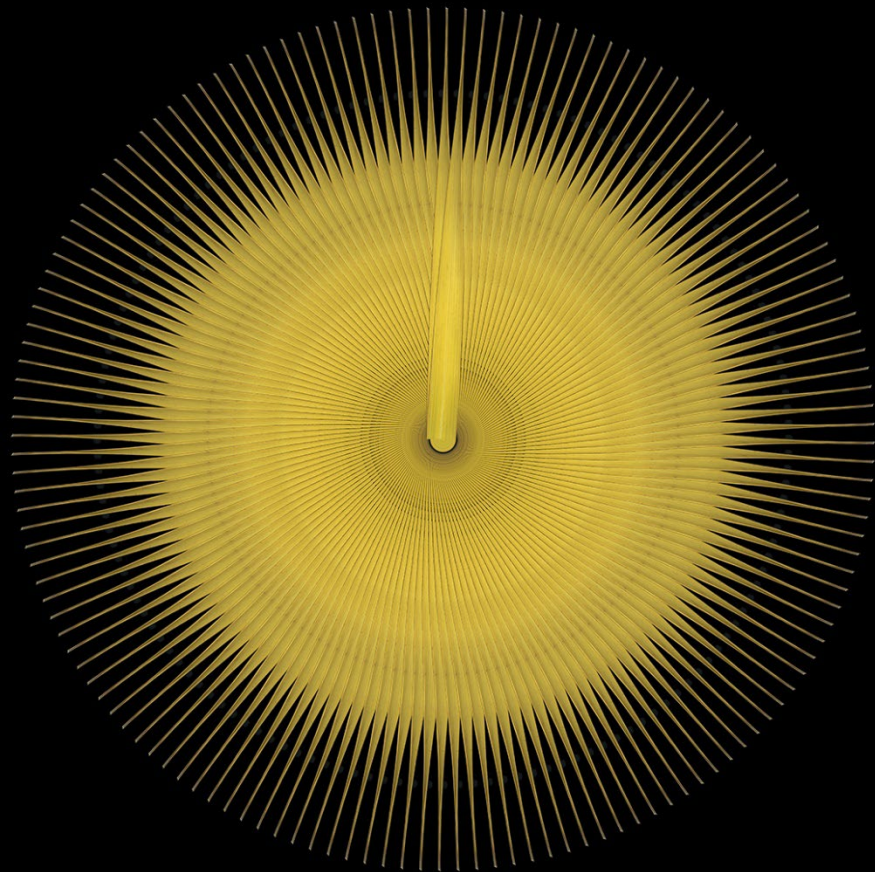


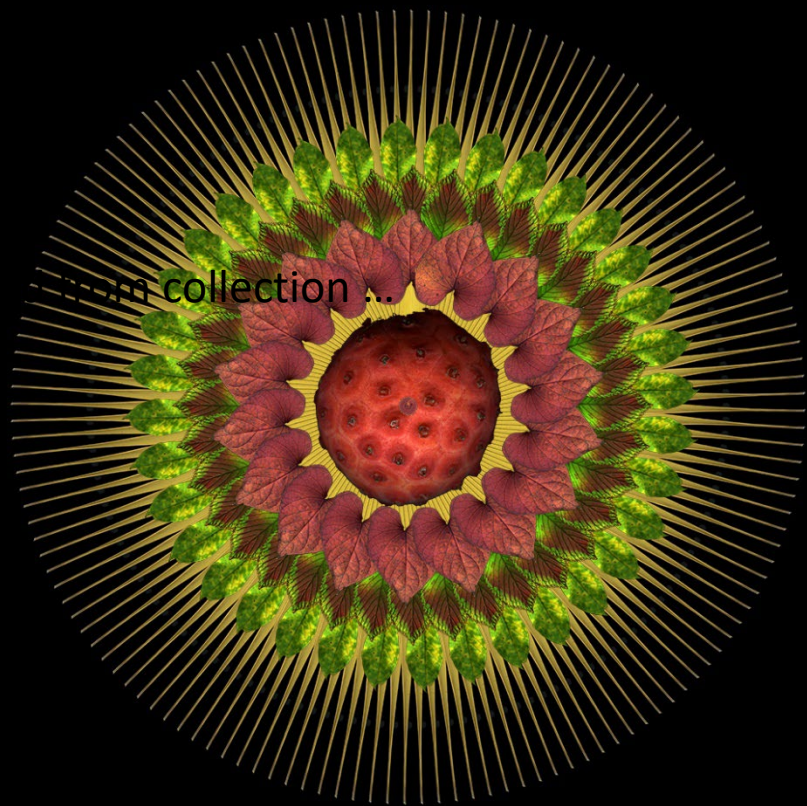




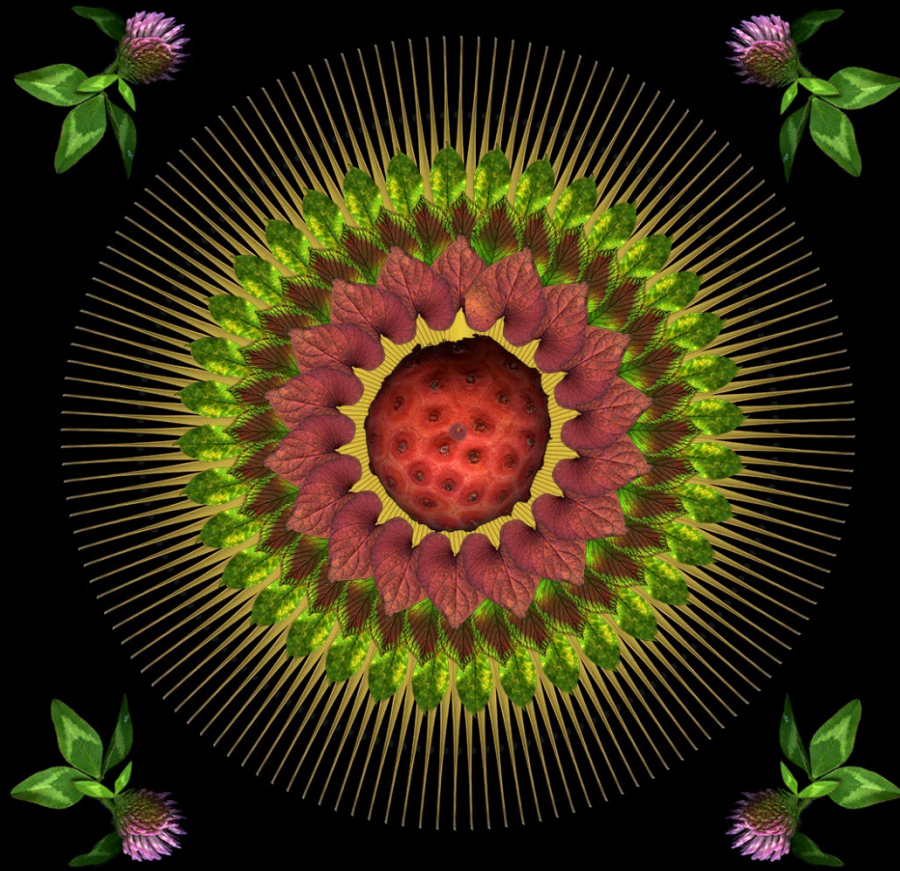








no-m collection ...



Fame and Fortune





MENU

theGREEN
GALLERY

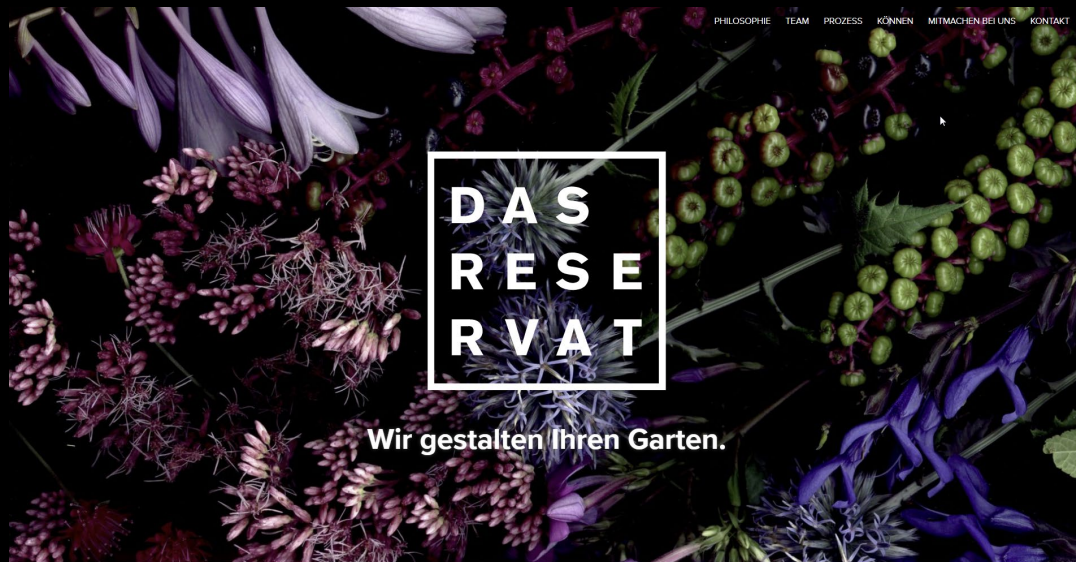
nl / en / fr / de

#9 NACHTBLOEMEN_Portfolio




Magische,
bloeiende
mandela's

PHILOSOPHIE TEAM PROZESS KÖNNEN MITMACHEN BEI UNS KONTAKT



DAS
RESE
RVAT

Wir gestalten Ihren Garten.



VEGETARIANEN HAN KANG

» Sensuell, provocerande och våldsam...
en oförglömlig upplevelse. «

* The Guardian *



NATUR &
KULTUR



DIAMOND DAY

MILKBEARD PRESENTS A BANZHAF/HARNISCH PRODUCTION SOFIA BANZHAF IN "DIAMOND DAY"
ALSO FEATURING TANYA BEVAN JAKE FISHER GRACE GLOWICKI MARCUS LACZKO DENISE YUEN LIZ ALBRIGHT
DIRECTOR OF PHOTOGRAPHY CALVIN THOMAS PRODUCTION DESIGNER DANIELLE SAHOTA EDITOR LEV LEWIS SOUND EDITOR AARON MIRKIN
PRODUCED BY KAREN HARNISCH SOFIA BANZHAF WRITTEN AND DIRECTED BY SOFIA BANZHAF



HORARIO
OPENING HOURS

12:00 h - MEDIANOCHE (DOMINGO - MIÉRCOLES)
12:00 - MIDNIGHT (SUNDAY - WEDNESDAY)

12:00 h - 1:00 h (JUEVES - SÁBADO)
12:00 - 1:00 PM (THURSDAY - SATURDAY)

EL JARDÍN DEL RITZ PERMANECE ABIERTO EN PRIMAVERA, VERANO Y OTONO DE ACORDO CON LAS METEOROLOGÍAS.
EL JARDÍN DEL RITZ REMAINS OPEN DURING SPRING, SUMMER AND AUTUMN WEATHER PERMITTING.

EN CASO DE EMERGENCIA PARA VER EL SENSO DE ENTRADA, ASÍ
COMO EL ACCESO EN CASO DE EMERGENCIA, ASÍ



RESERVAS / RESERVATIONS
MRMAD-JARDINDEL RITZ@MOHG.COM

+34 917 016 822



MANDARIN ORIENTAL
RITZ
MADRID





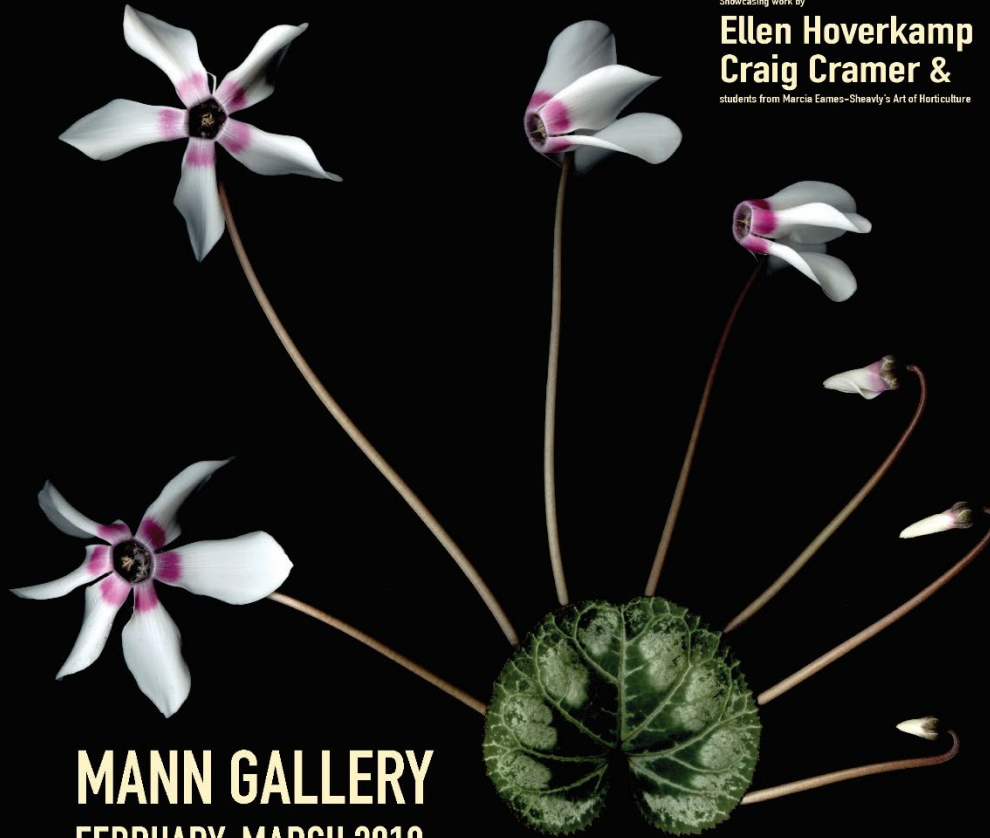
A SWEEP OF LIGHT

SCANNER PHOTOGRAPHY & THE ART OF HORTICULTURE

Showcasing work by

**Ellen Hoverkamp
Craig Cramer &**

students from Marcia Eames-Shawly's Art of Horticulture



MANN GALLERY
FEBRUARY-MARCH 2018
OPENING EVENT: 2/21/18



Cornell University Library
MANN LIBRARY

This exhibit is a collaboration between Mann Library and the School of Integrative Plant Science Horticulture Section, and is made possible through the support of the Elizabeth E. (Betty) Rowley Fund for Mann Library.

For questions, or if you need special arrangements to attend the exhibit, please contact Mann Library at (607) 255-5406.



Craig Cramer

- ellishollow.remarc.com
- cdcramer@gmail.com
- Instagram: @cdcramer42

'Art makes me a better
gardener.'

Gardening makes me a
better artist.'